

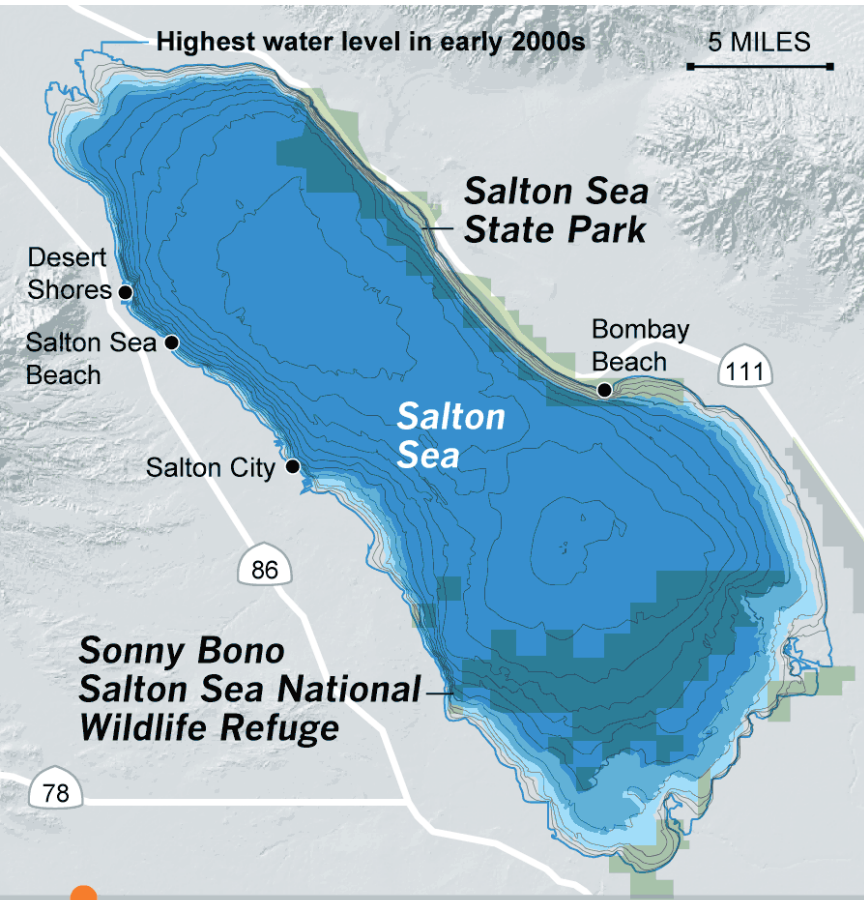
A large flock of birds, likely shorebirds, is captured in flight against a clear blue sky. The birds are scattered across the upper half of the frame, with some in sharp focus and others blurred. In the background, a range of blue mountains stretches across the horizon. Below the mountains, a body of water is visible, and the foreground consists of a dry, grassy field with some green patches. In the bottom left corner, a small group of white birds is visible on the ground.

Química & ecología en el mar Salton

Jonathan Nye, Ph.D.
jonathan.nye@ucr.edu

UNIVERSITY OF CALIFORNIA
UCRIVERSIDE





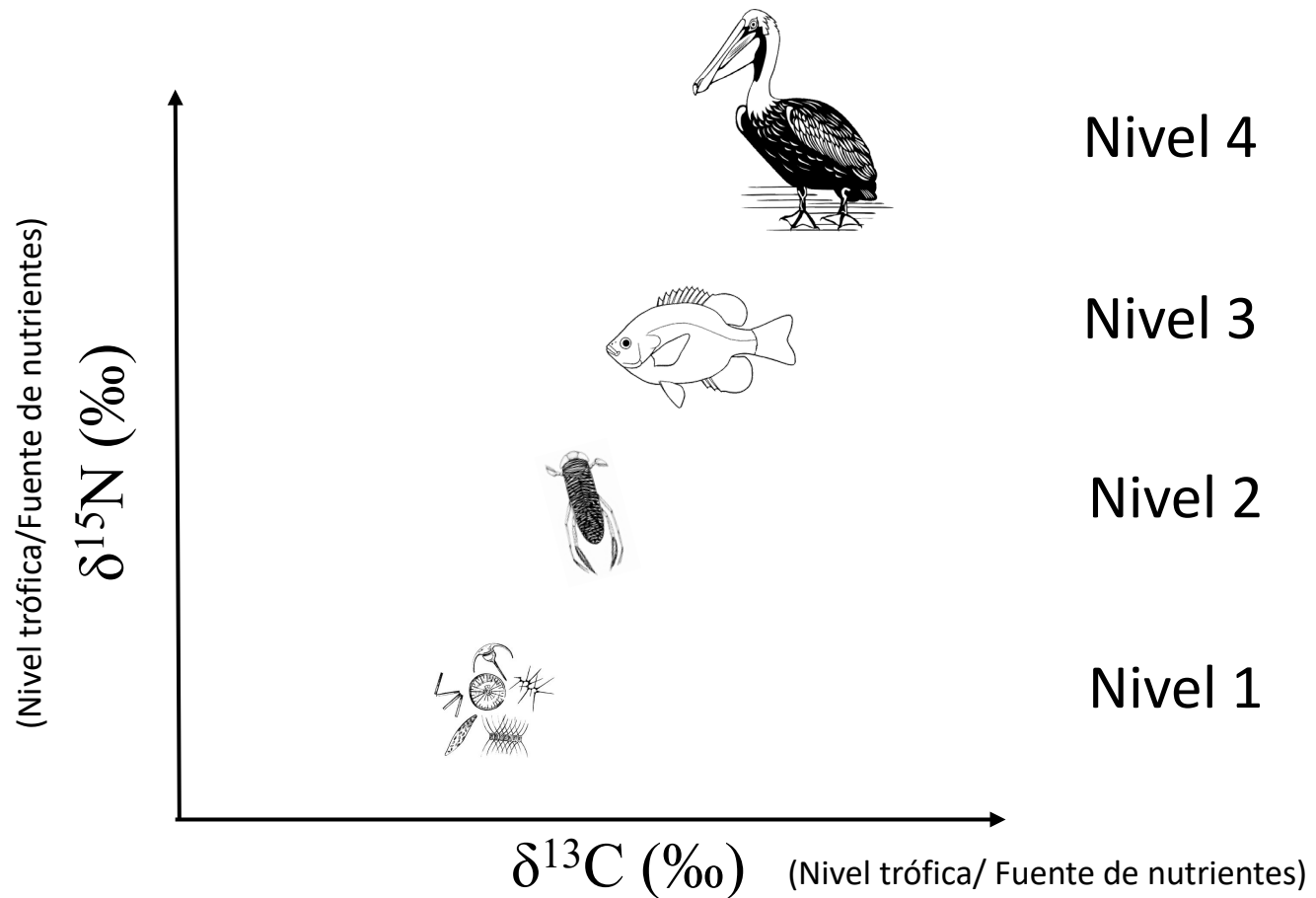
2018

Elevation 235 ft.
below sea level

Química en cambio

- Salinidad
- Nutrientes

Dieta reconstrucción biogeoquímica – Isótopos estables y red trófica





Nutrientes abióticos (nitrógeno, fósforo)

Productores

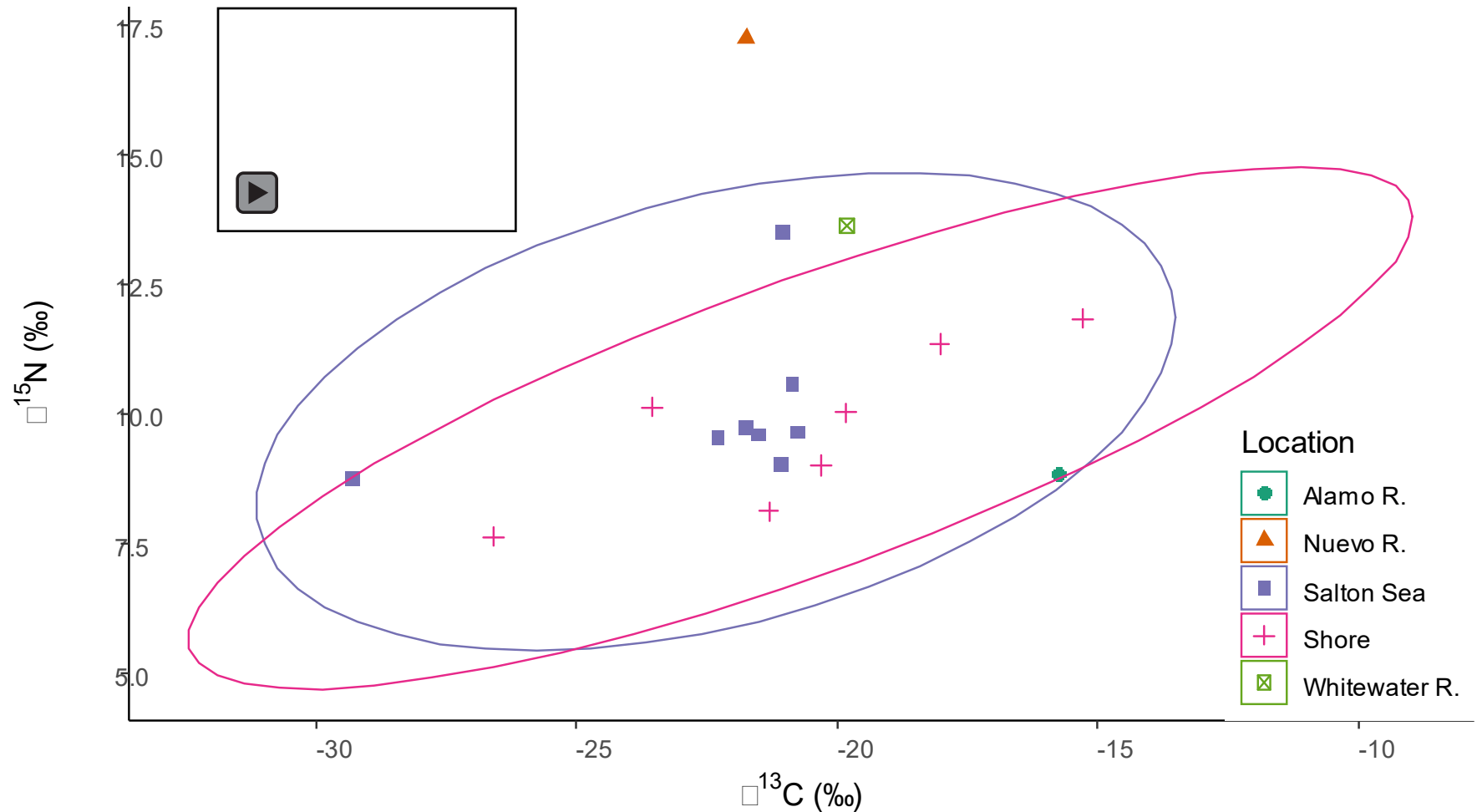


Algas/Fitoplancton

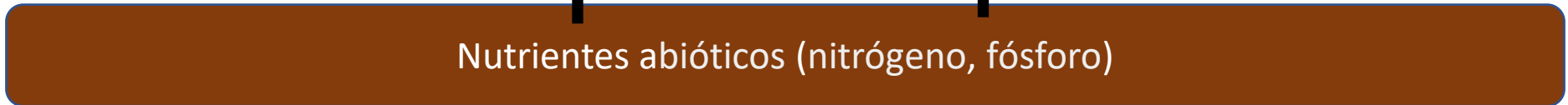
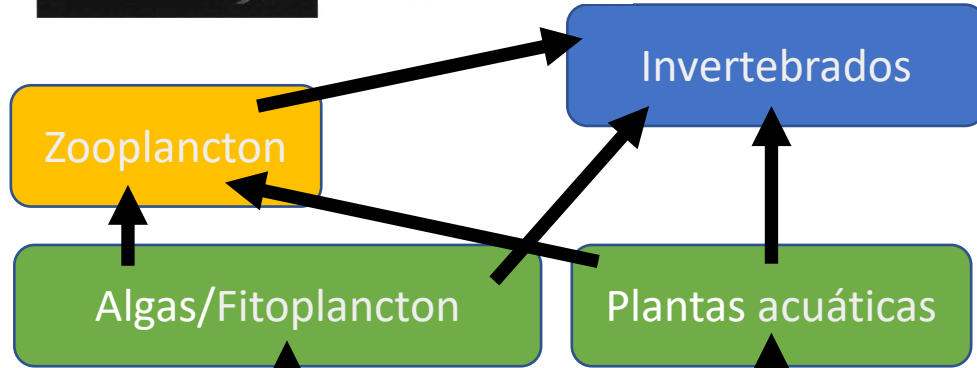
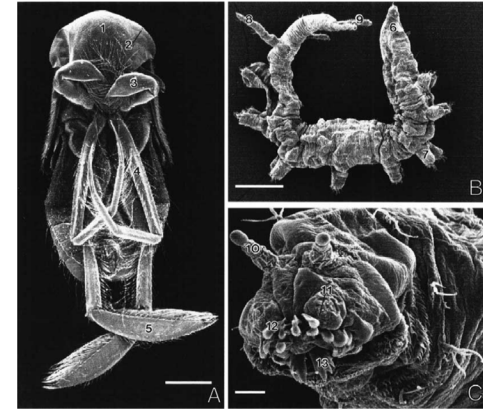
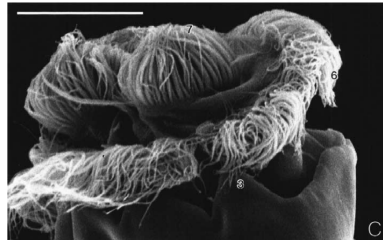
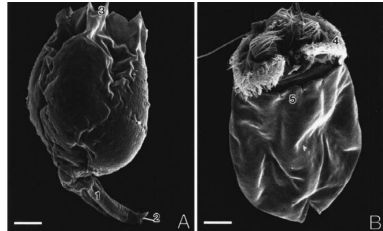
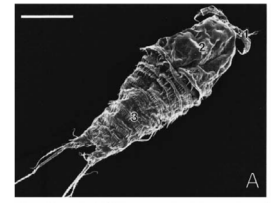
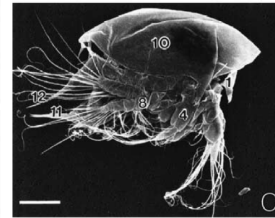
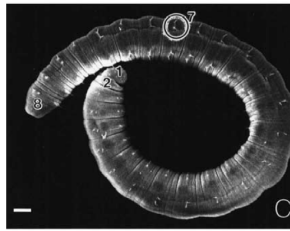
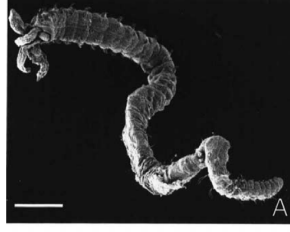
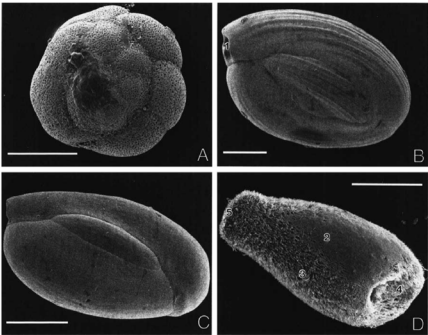
Plantas acuáticas

Nutrientes abióticos (nitrógeno, fósforo)

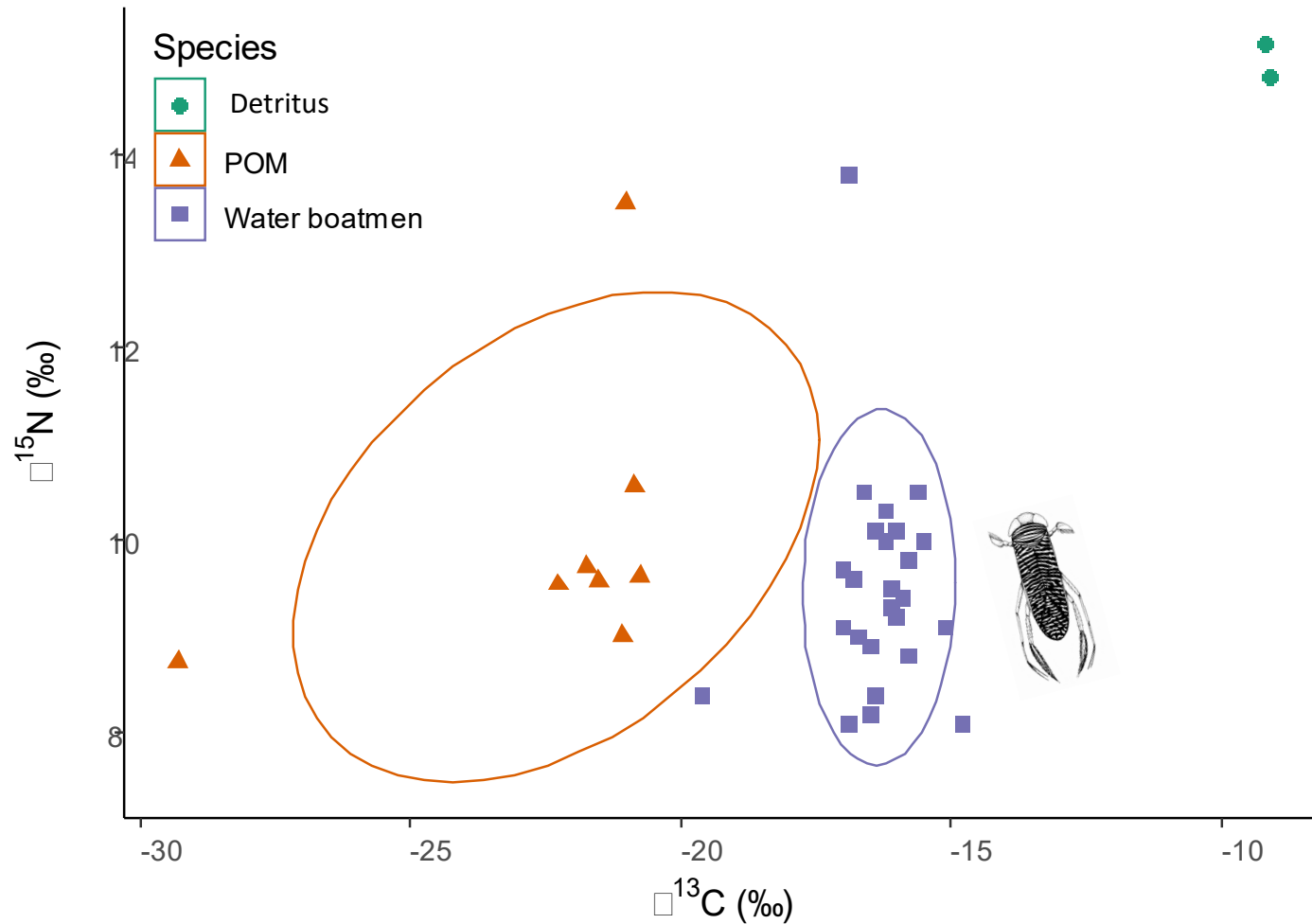
Particulate Organic Matter (POM, materia orgánica particulada)



Consumidores



El baso de la red trófica



Peces



Peces (Tilapia, Molly Lira Dalmata, Pupo del desierto, Chupalodo grande)



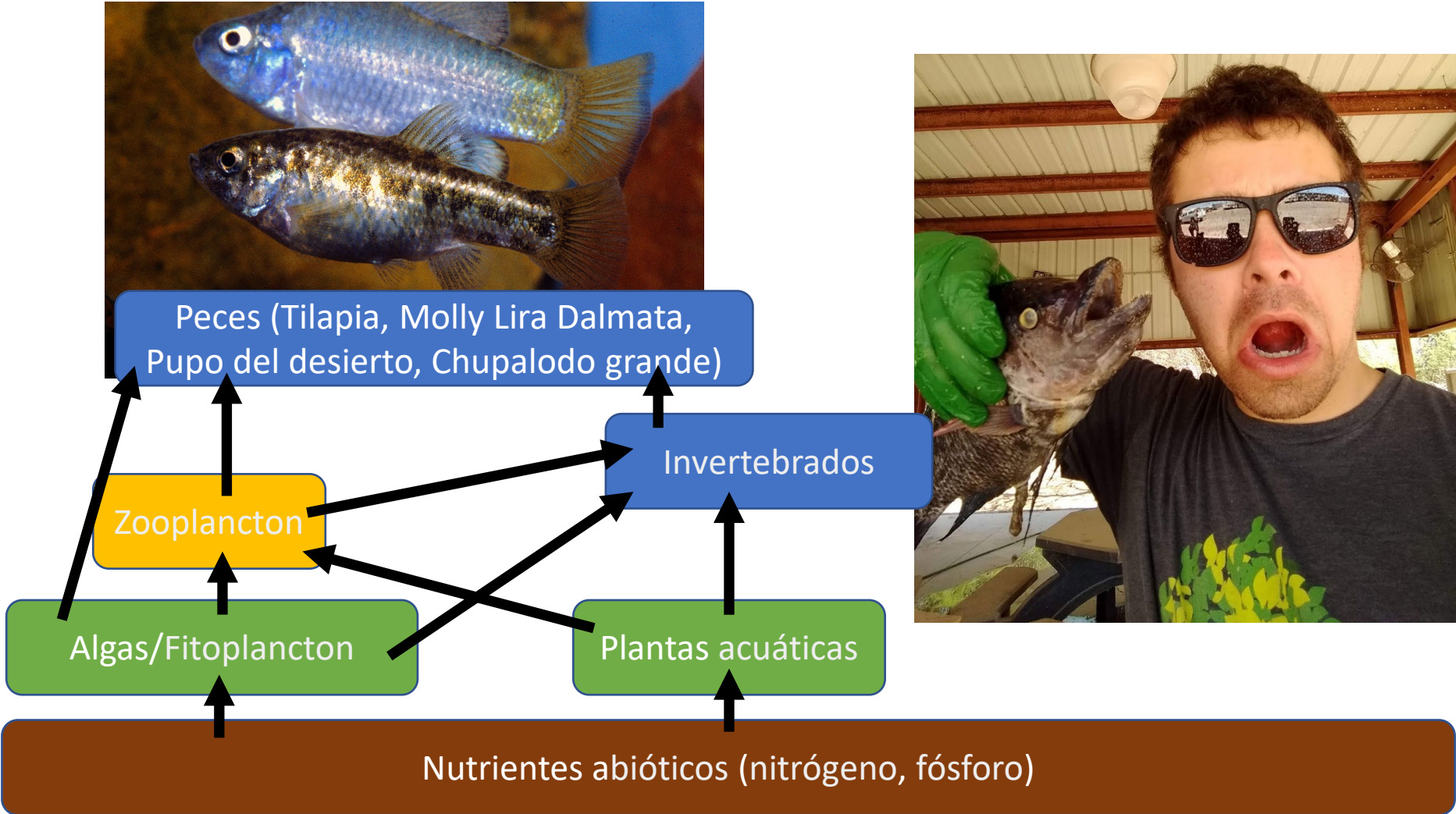
Invertebrados

Zooplankton

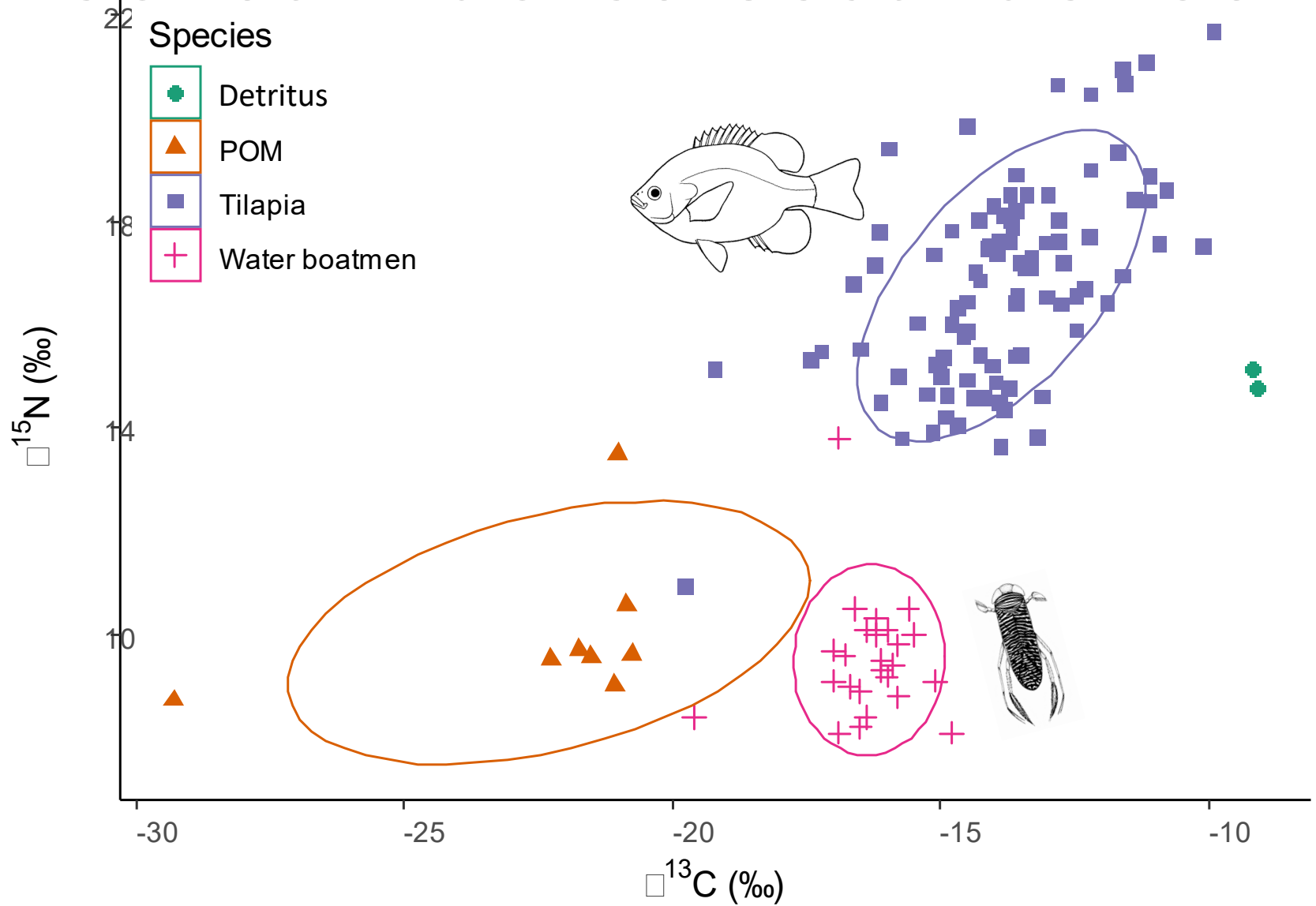
Algas/Fitoplancton

Plantas acuáticas

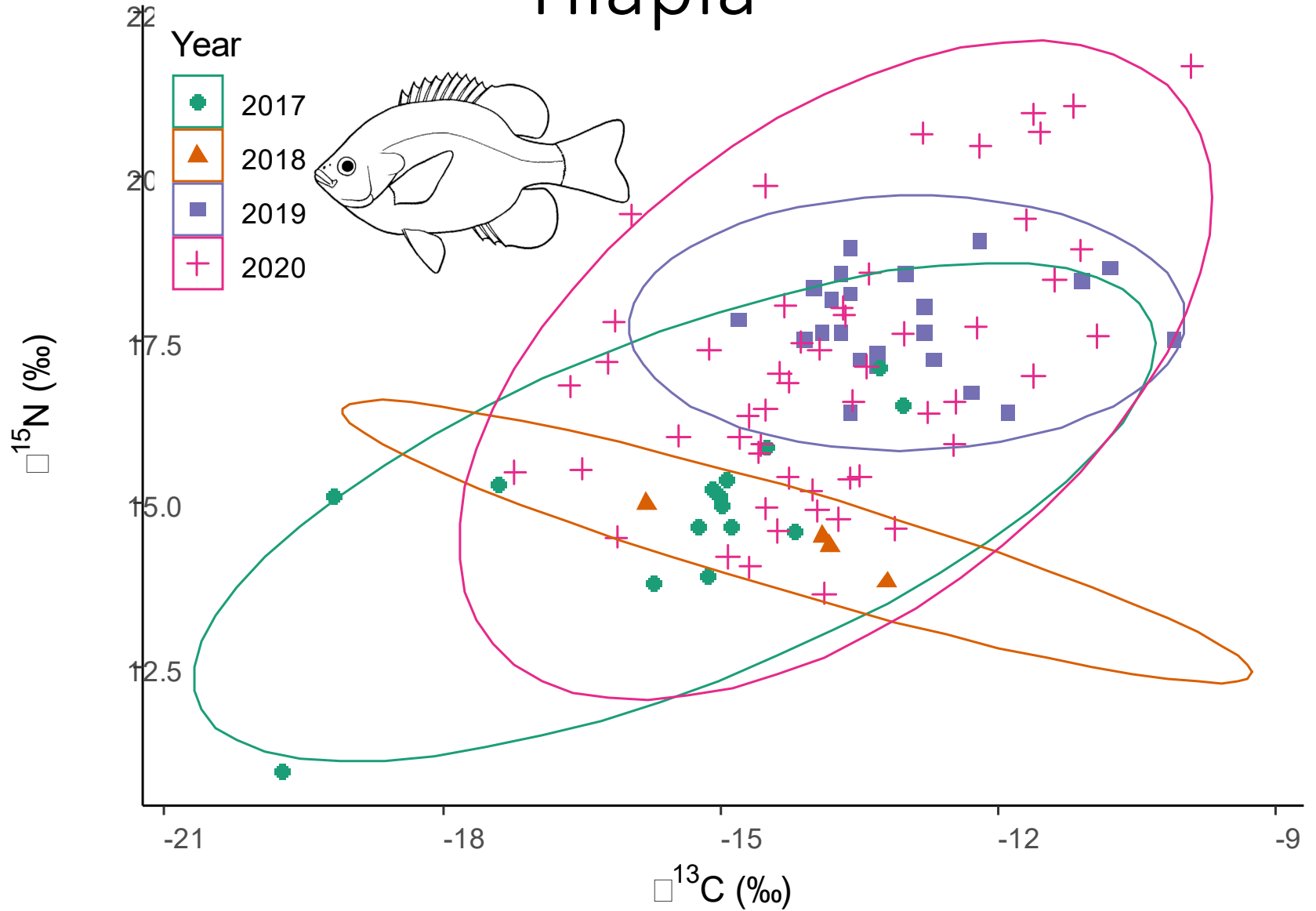
Nutrientes abióticos (nitrógeno, fósforo)



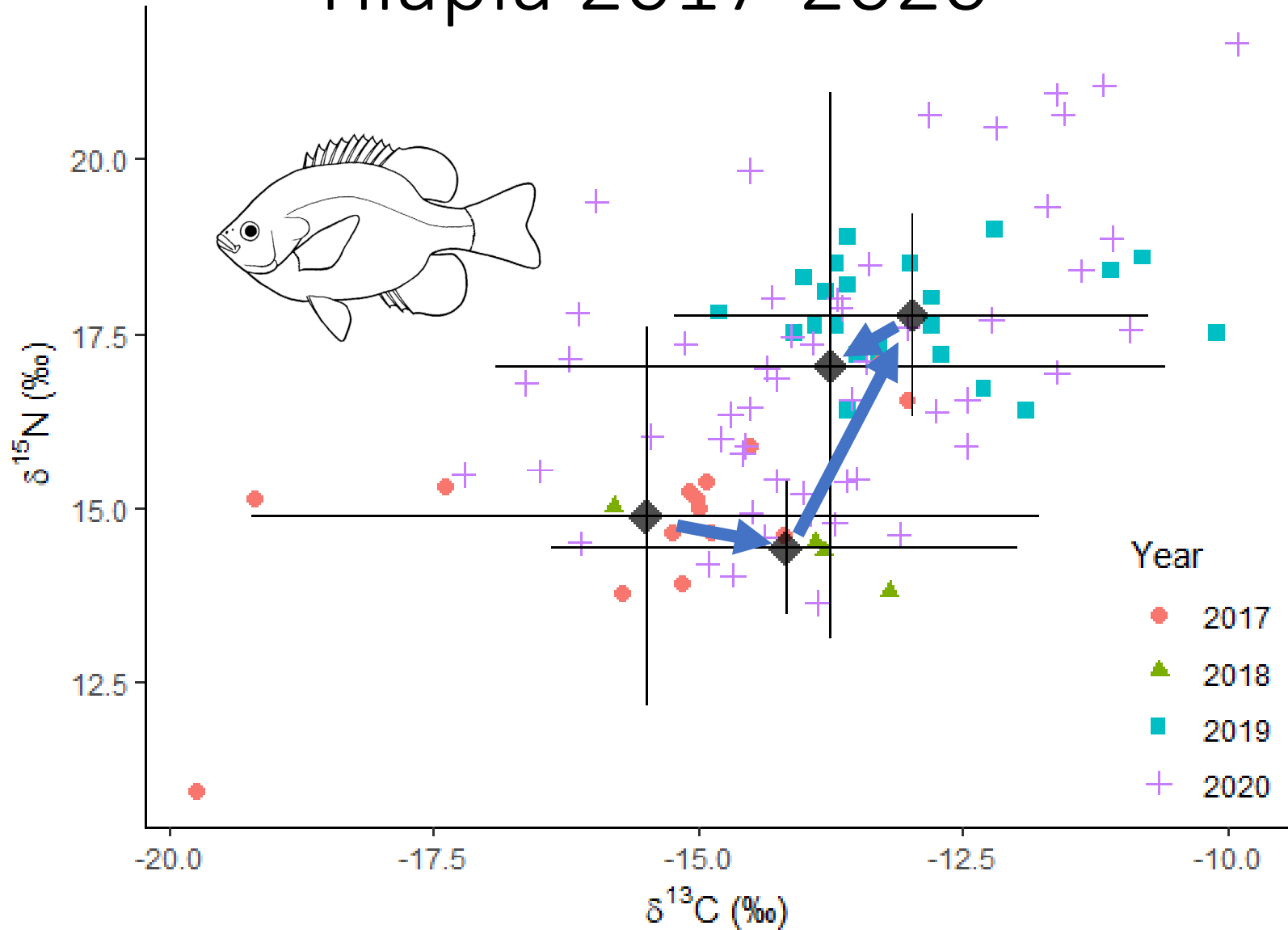
Consumidores Secundarios



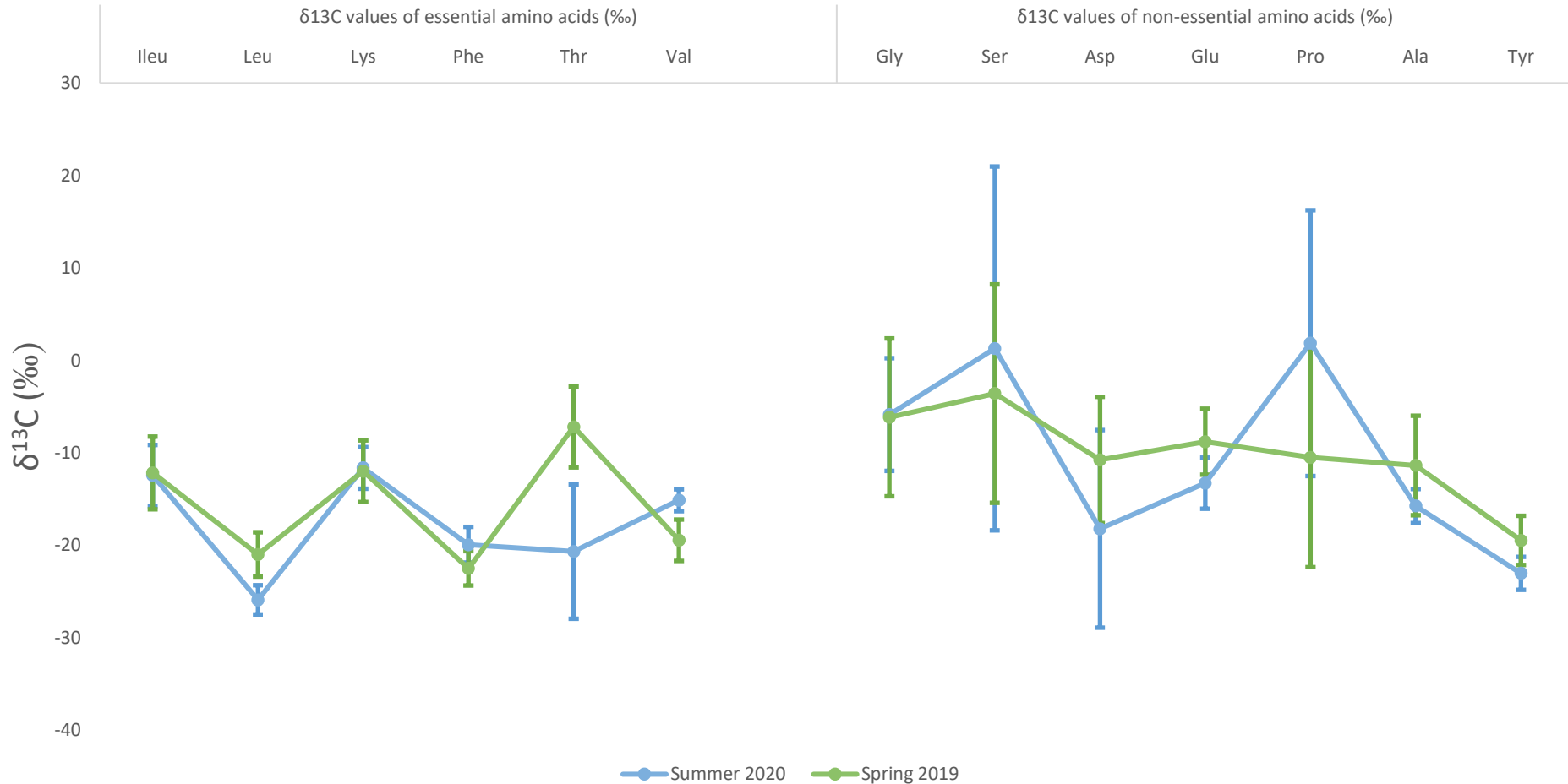
Tilapia



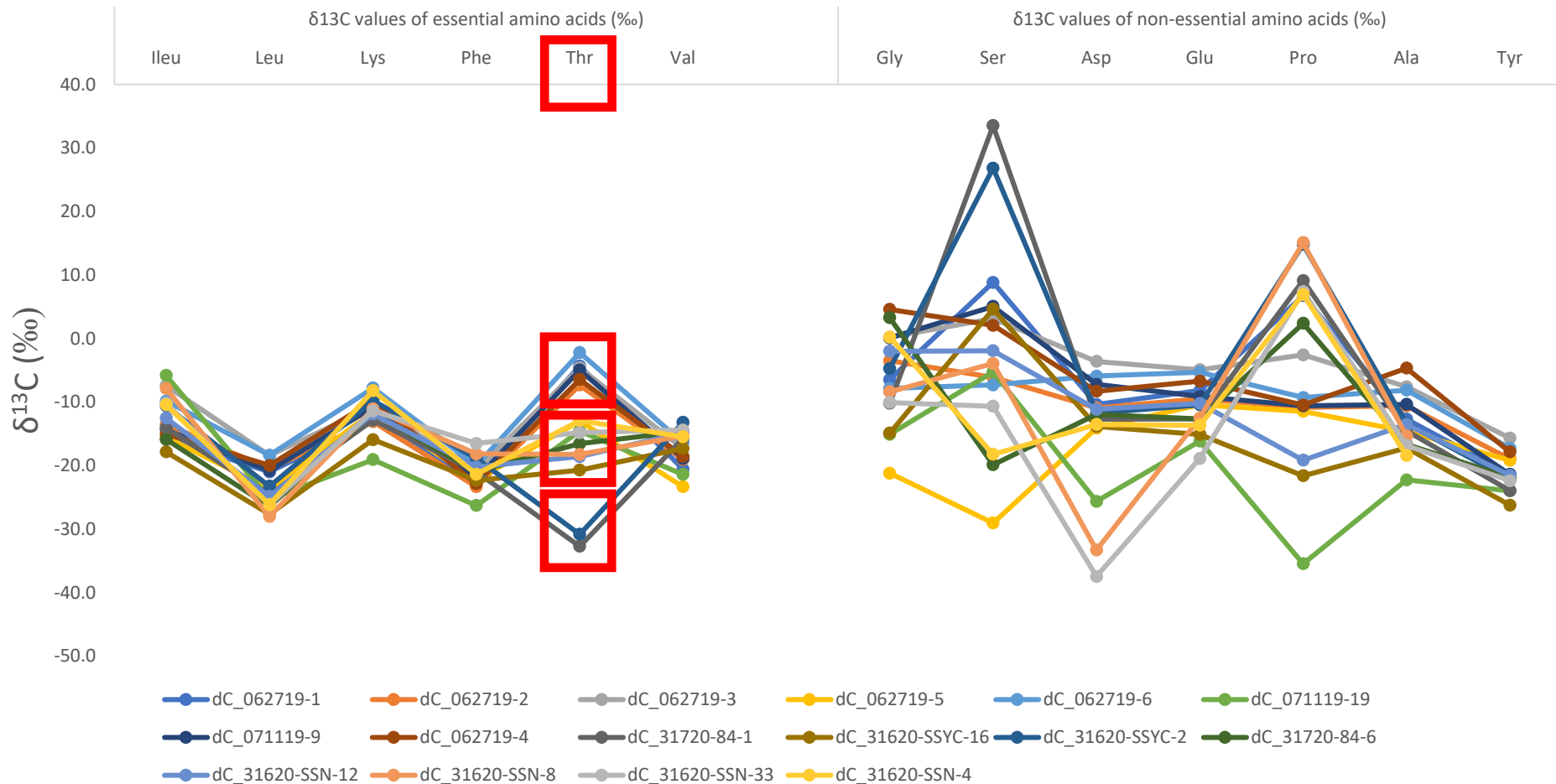
Tilapia 2017-2020



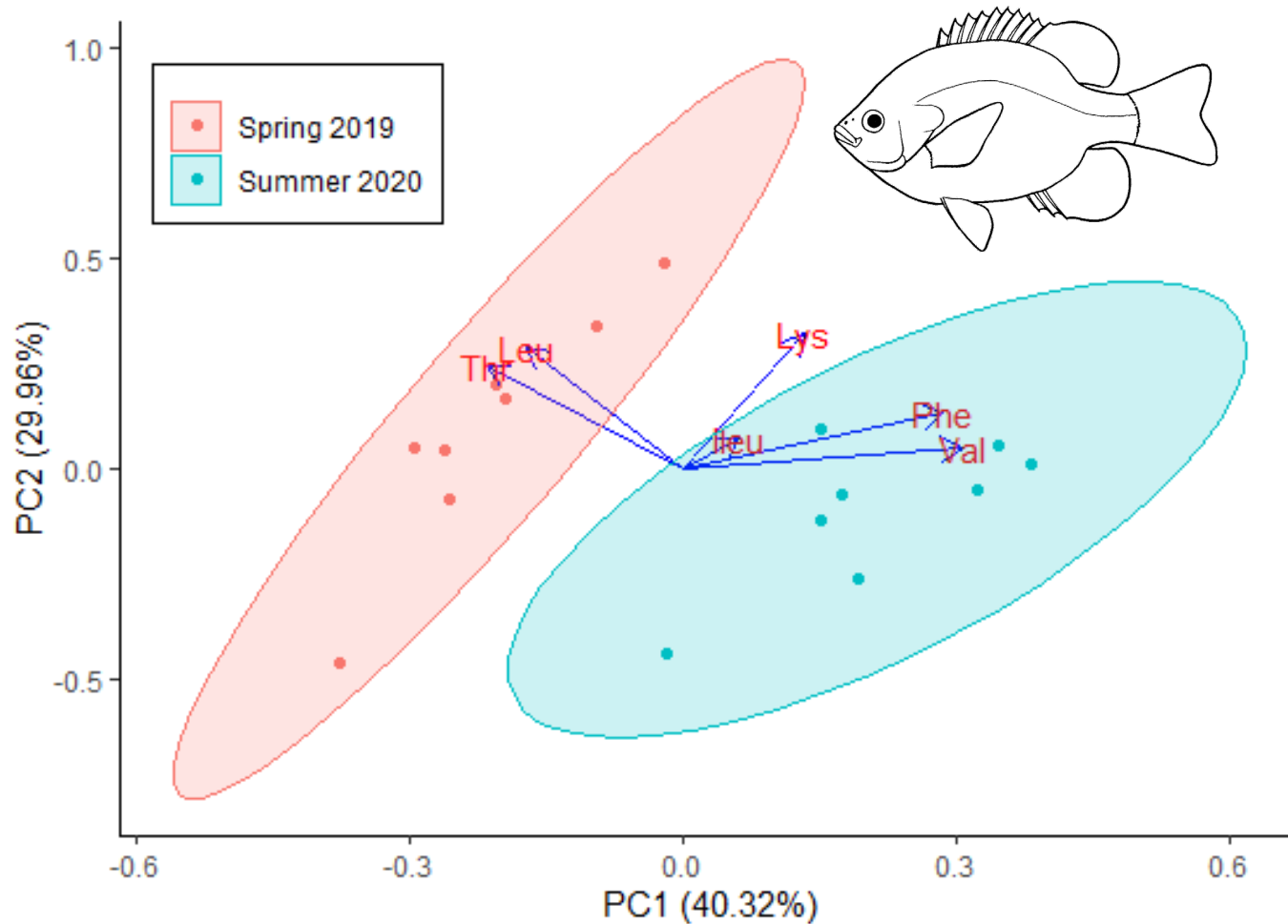
Promedios anuales de $\delta^{13}\text{C}$ de ácidos aminos (AAs) en Tilapia



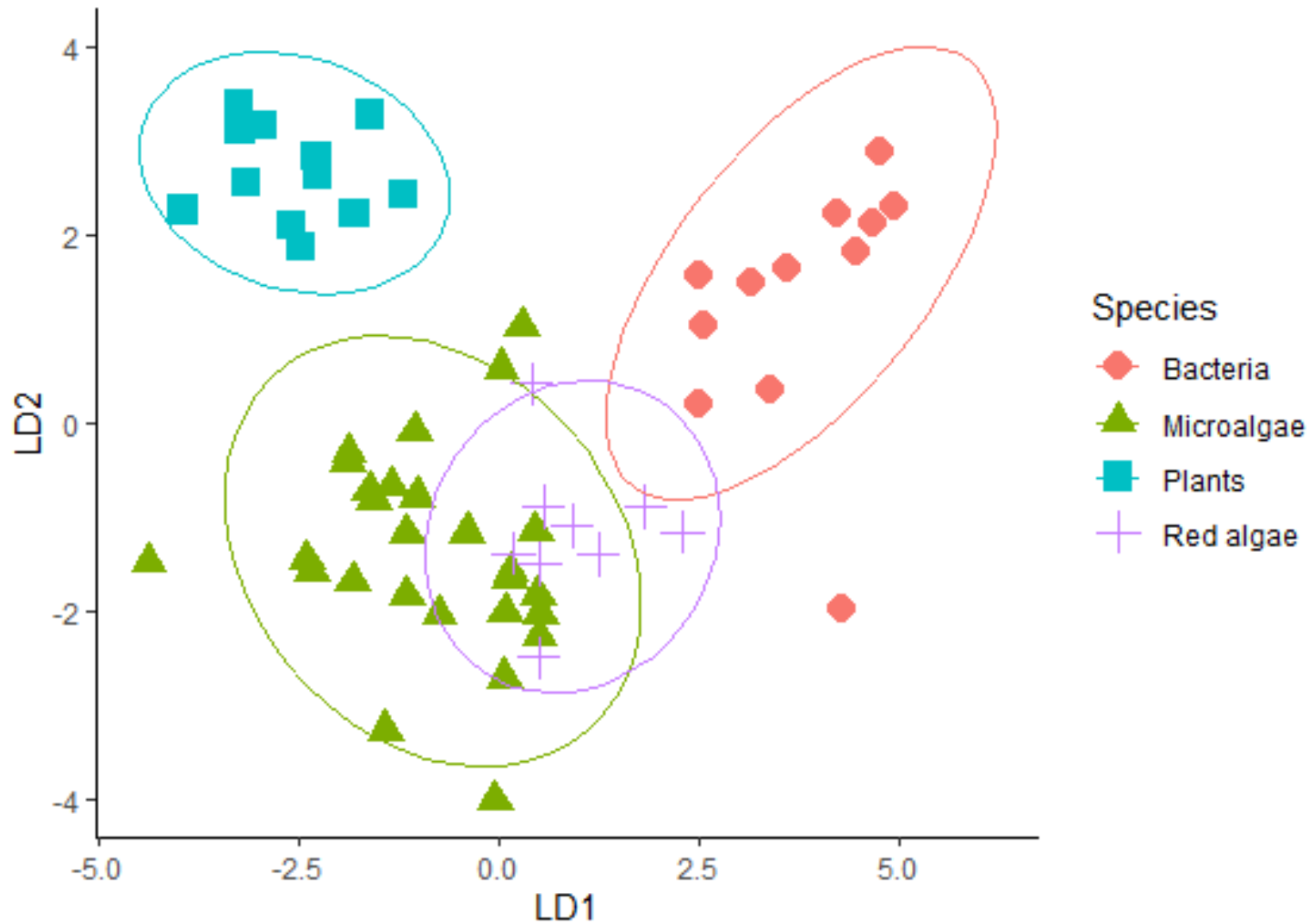
$\delta^{13}\text{C}$ de ácidos aminos (AAs) en Tilapia individuales



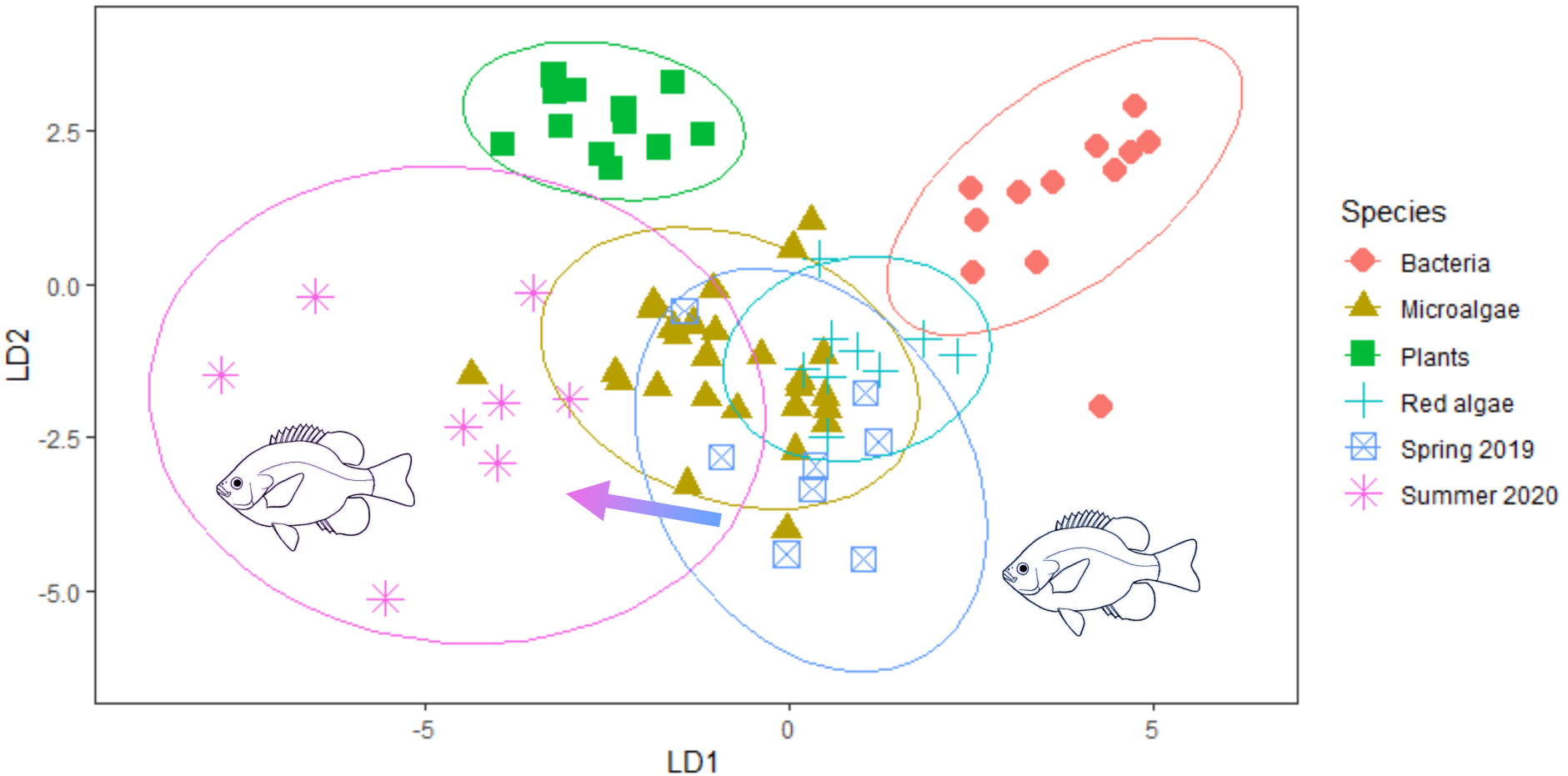
Modelo de $\delta^{13}\text{C}$ de ácidos aminos esenciales (EAAs) en Tilapia



Algunas productores potencial



Productores potencial y Tilapia! (2019 y 2020)



Aves

Aves insectívoros (correlimos, cigüeñuelas, patos)

Peces (Tilapia, Molly Lira Dalmata, Pupo del desierto, Chupalodo grande)

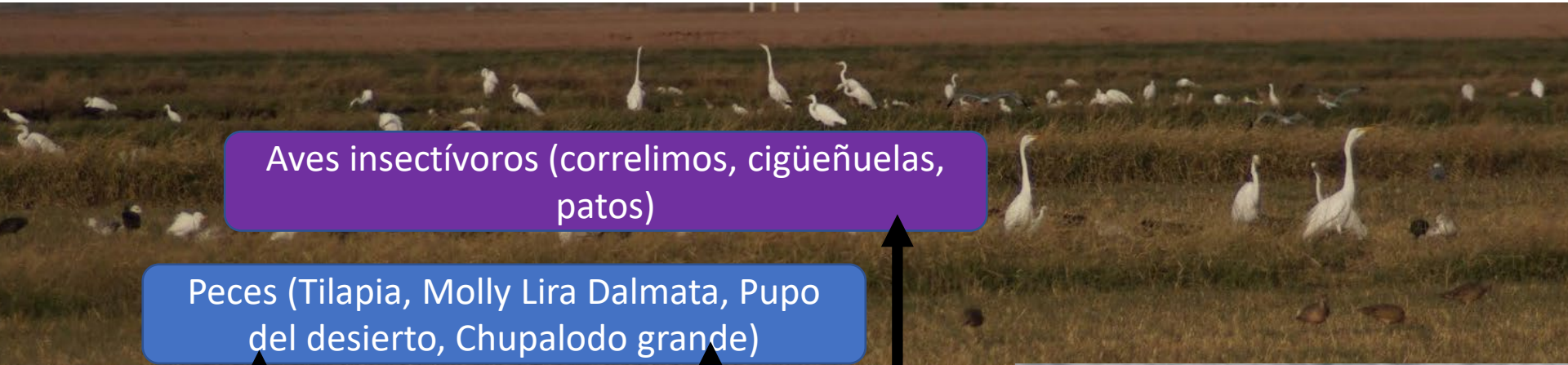
Invertebrados

Zooplancton

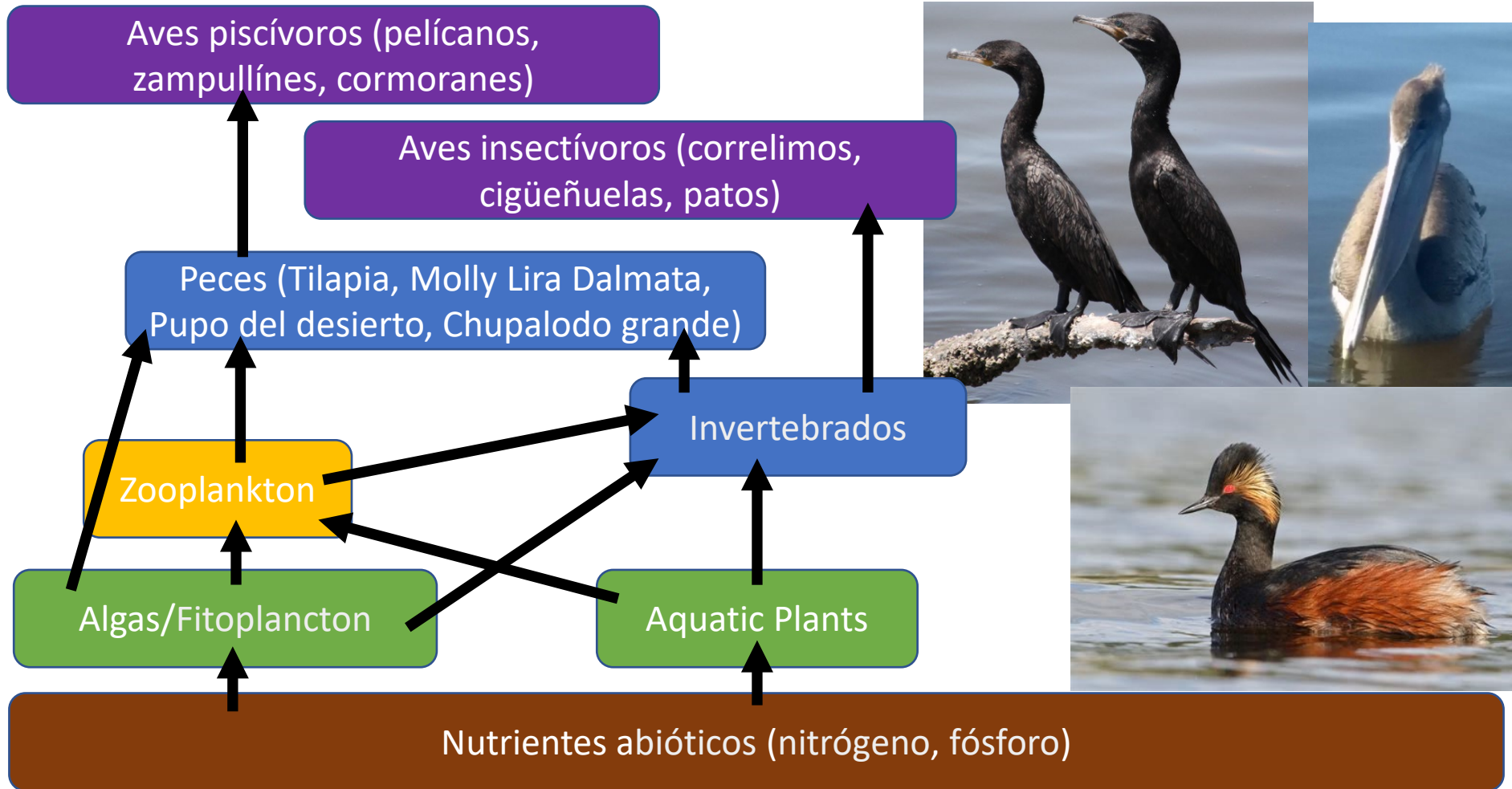
Algas/Fitoplancton

Plantas acuáticas

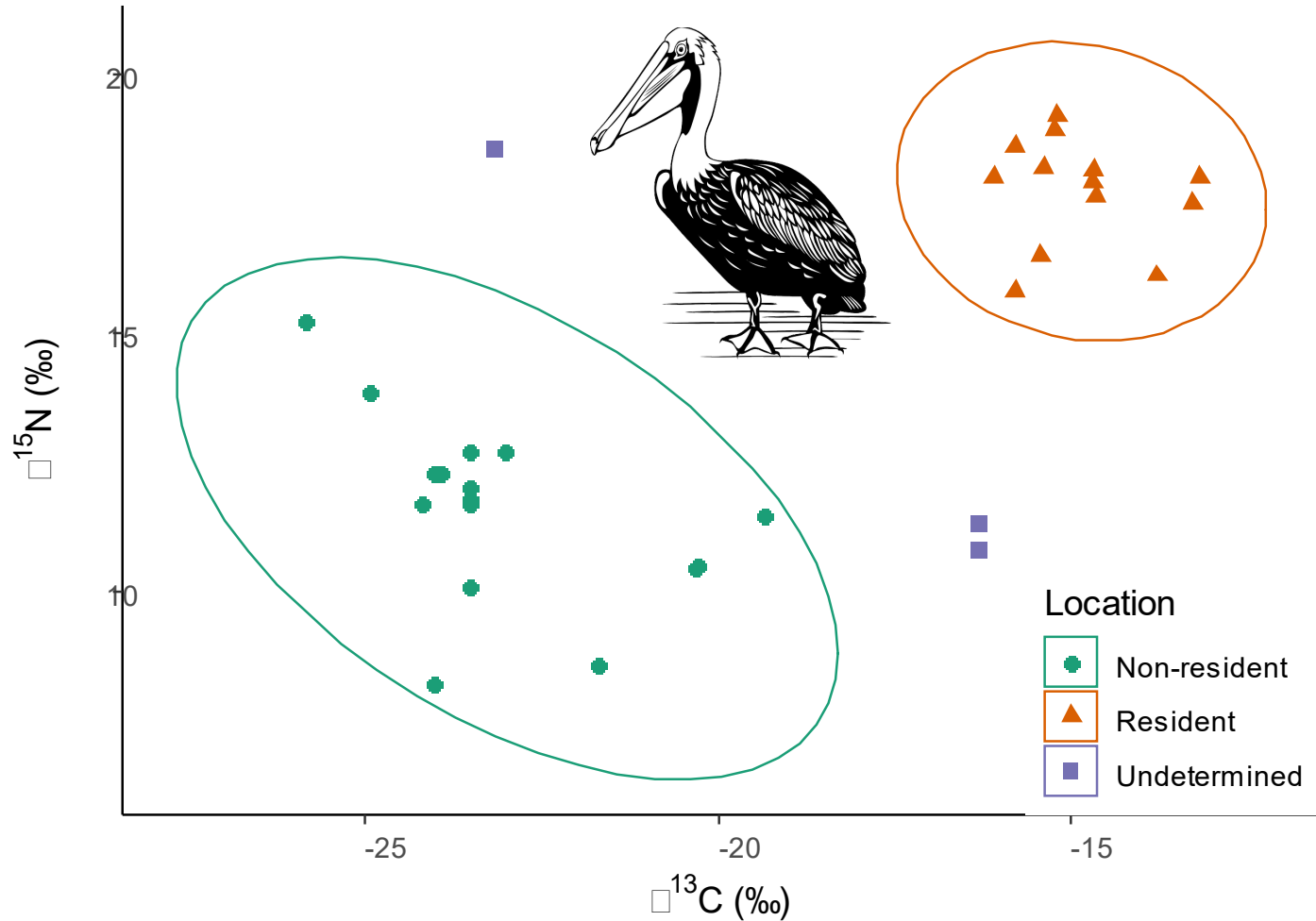
Nutrientes abióticos (nitrógeno, fósforo)



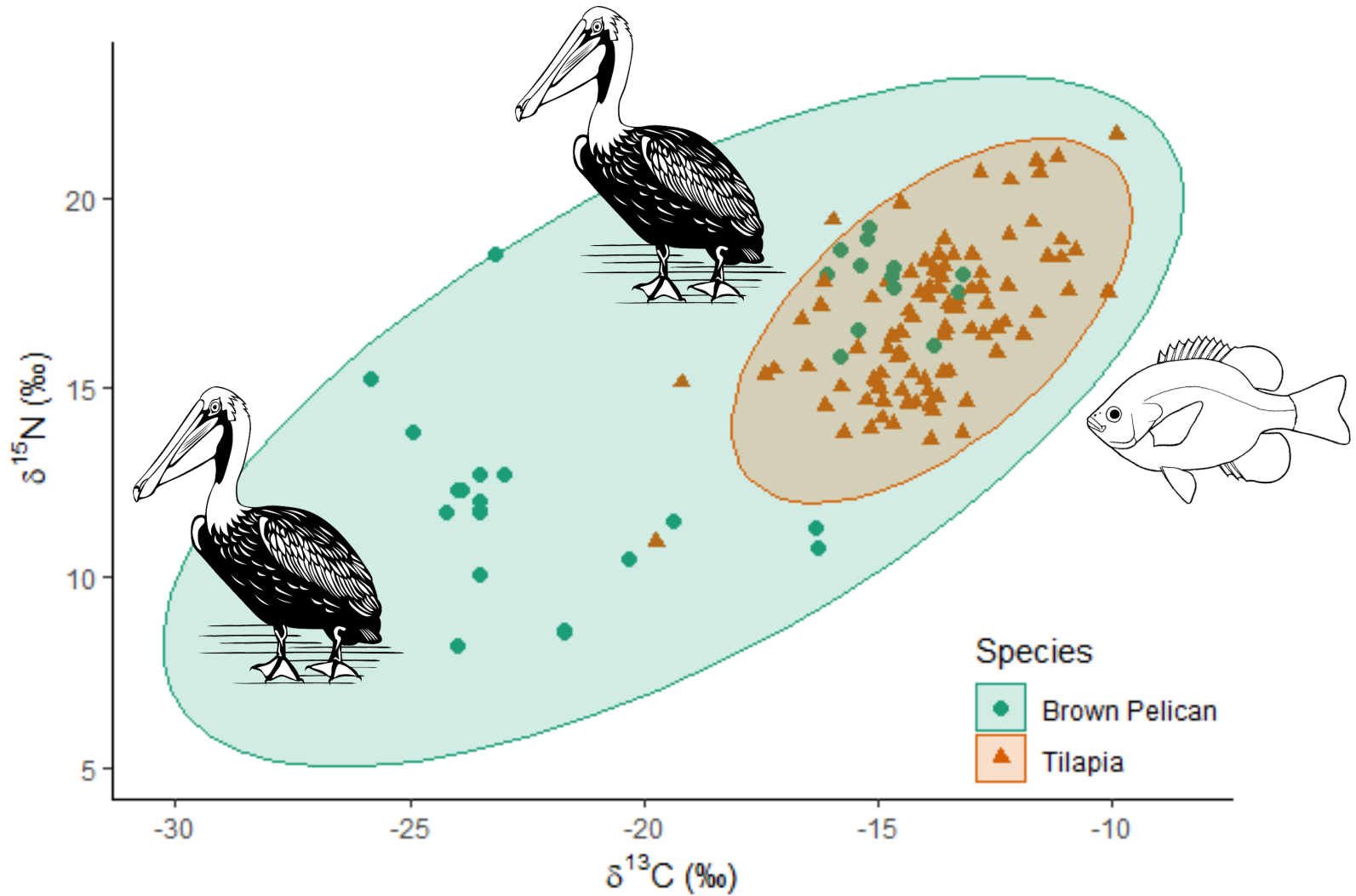
Aves



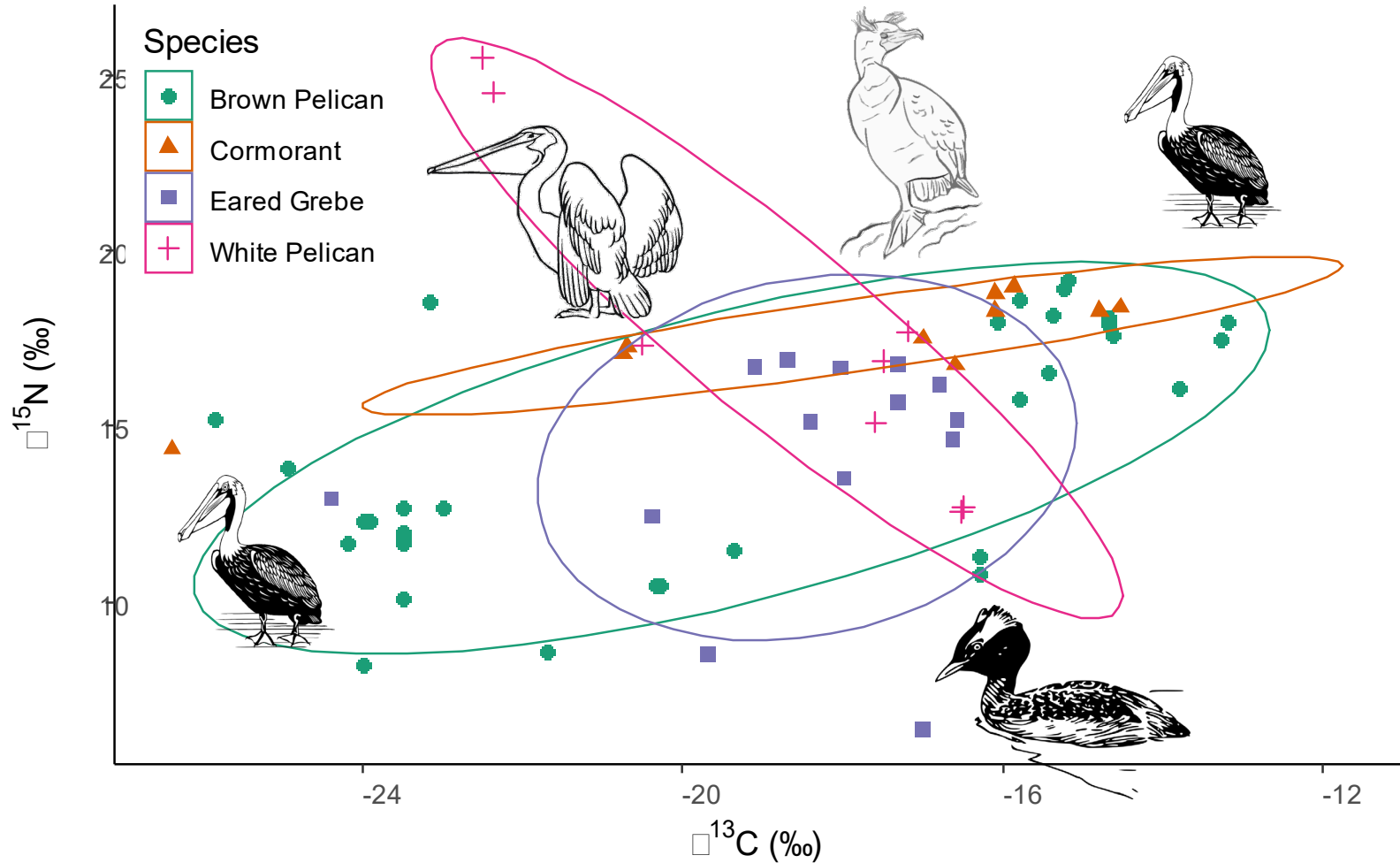
pelícanos pardos



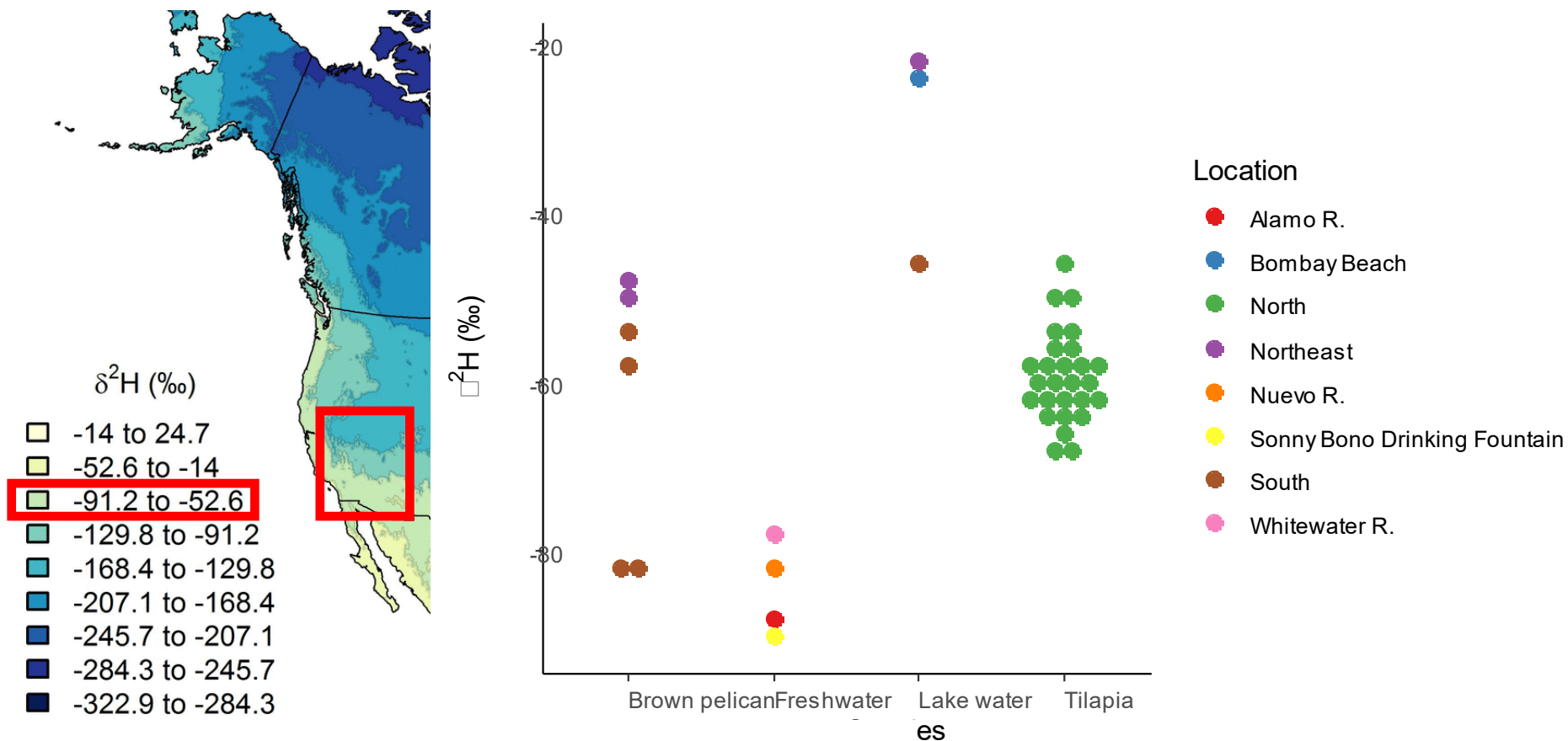
pelícanos pardos y Tilapia



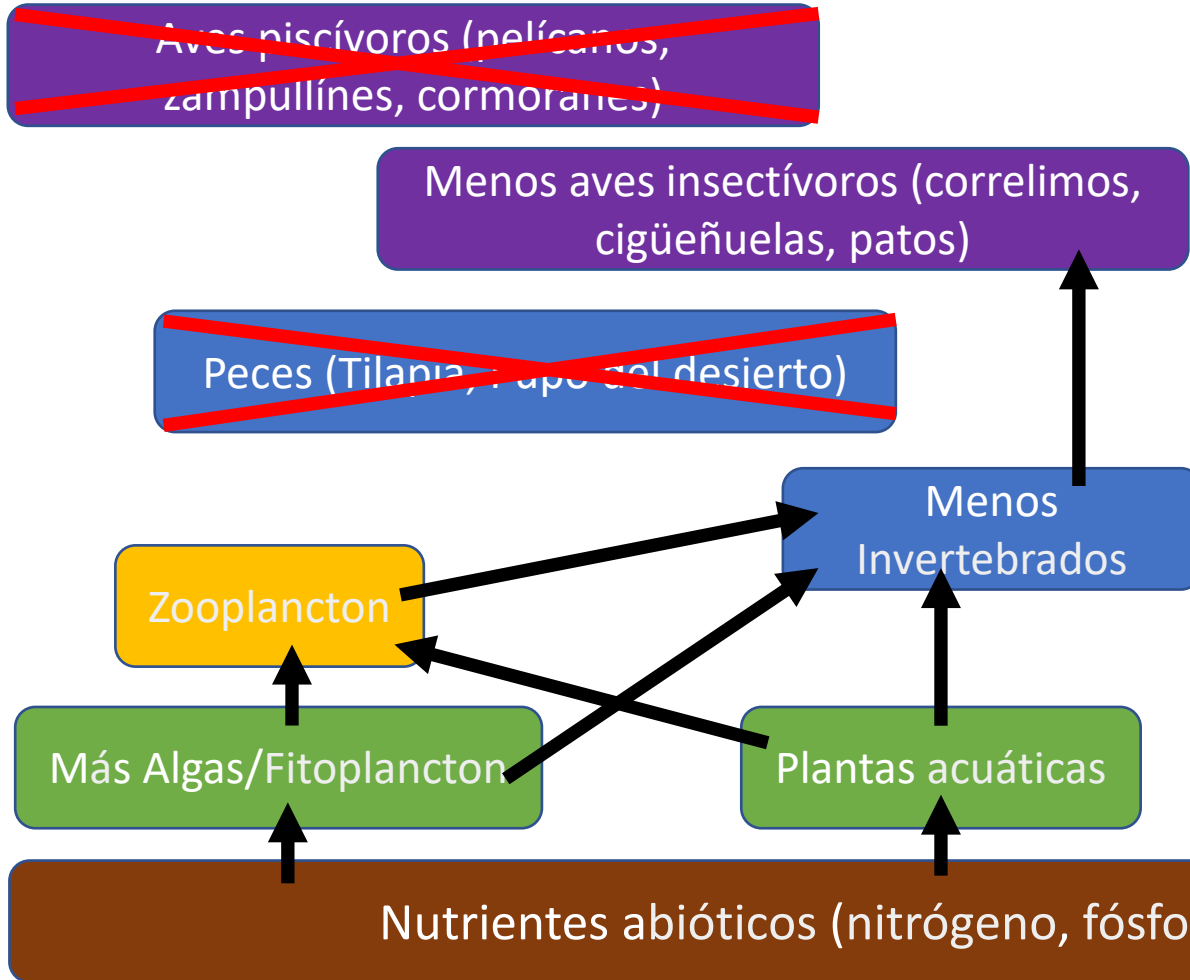
Aves piscívoros



¿De donde es el agua?



¿Colapso de la red trófica?



Agradecimientos

UCR EDGE Lab

Brenda Bermudez, Ying Lin, Kaycee Morra, Bobby Nakamoto, Jeanette Westbrook, Marilyn Fogel

UCR SSTF

Marilyn L. Fogel, Hoori Ajami, Emma Aronson, Roya Bahreini, Susan Hackwood, Darrel Jenerette, David Lo, Timothy Lyons, Michael McKibben, William Porter, Arun Raju, Kurt Schwabe, Caroline Hung, Jeanette Westbrook, Theresa Kane, Kathy Eiler, Juan Herrera, Elizabeth Romero

CA FWS

Nasseer Idrisi

