

Peter Nelson

Colorado River Board of CA

Salton Sea Summit Presentation

April 6, 2022

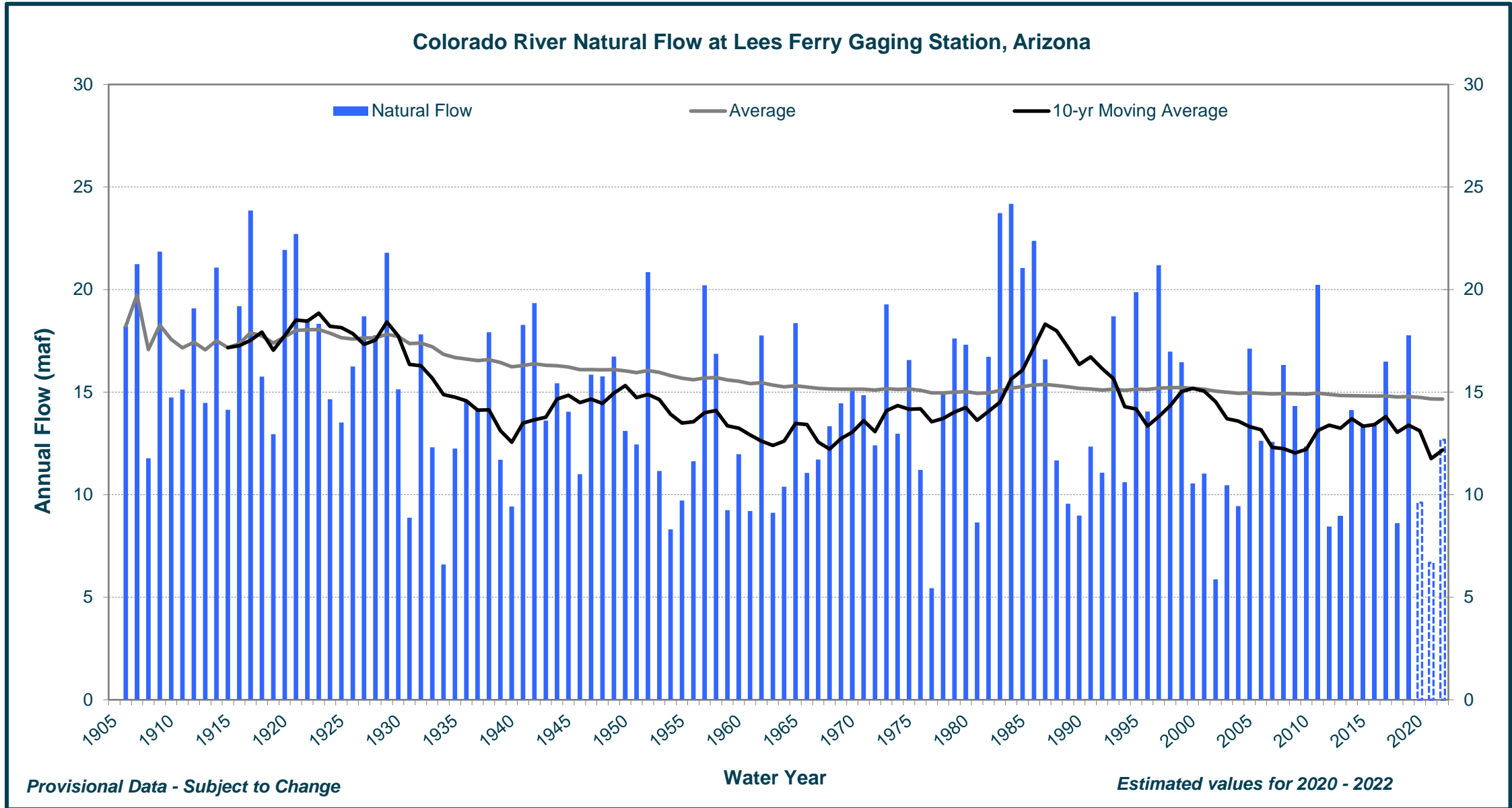




Natural Flow

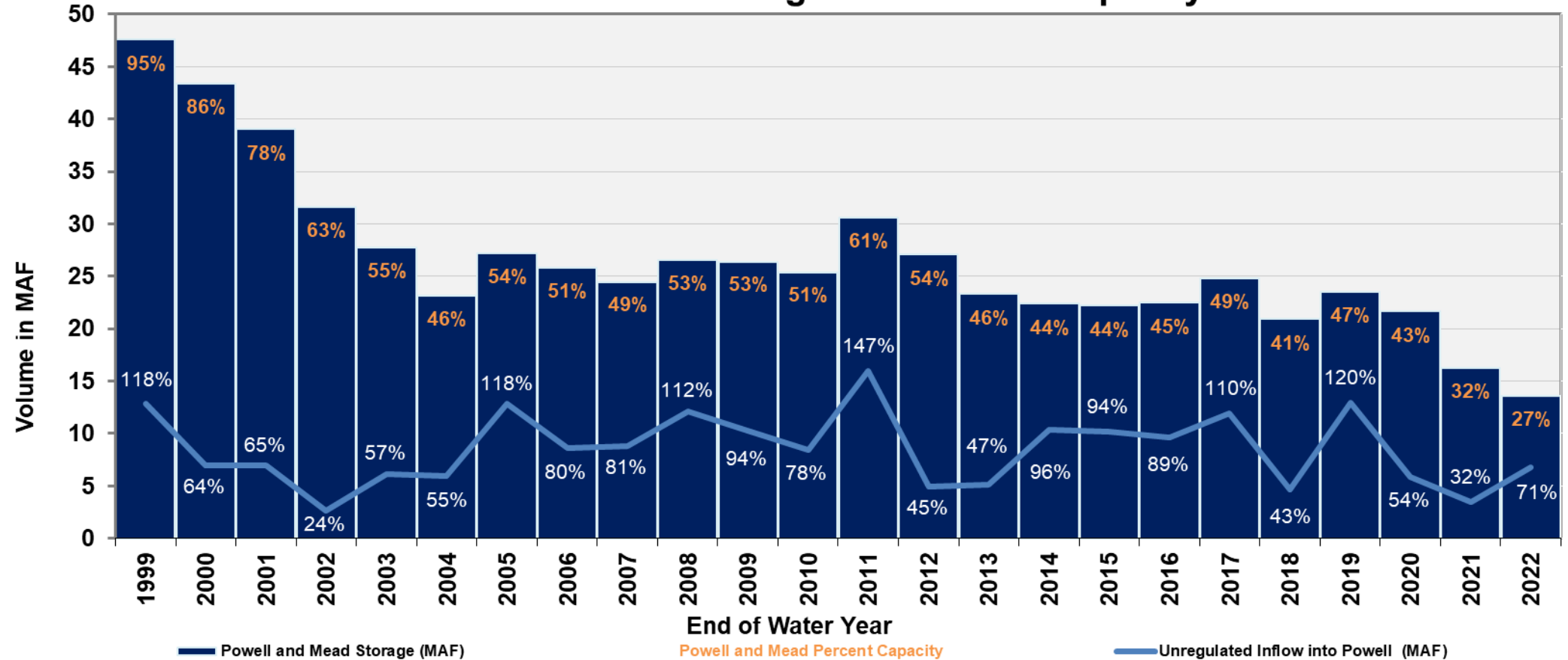
Colorado River at Lees Ferry Gaging Station, Arizona

Water Year 1906 to 2022



State of the System (Water Years 1999-2022)^{1,2}

Unregulated Inflow into Lake Powell Powell-Mead Storage and Percent Capacity



¹ Values for Water Year 2022 are projected. Unregulated inflow is based on the latest CBRFC forecast dated March 16, 2022. Storage and percent capacity are based on the March 2022 24-Month Study.

² Percentages on the light blue line represent percent of average unregulated inflow into Lake Powell for a given water year. The percent of average is based on the period of record from 1981-2010 for Water Years 1999-2021. Water Year 2022 percent of average is based on the period of record from 1991-2020.



Water Year Snowpack and Precipitation^{1,2} as of March 28, 2022

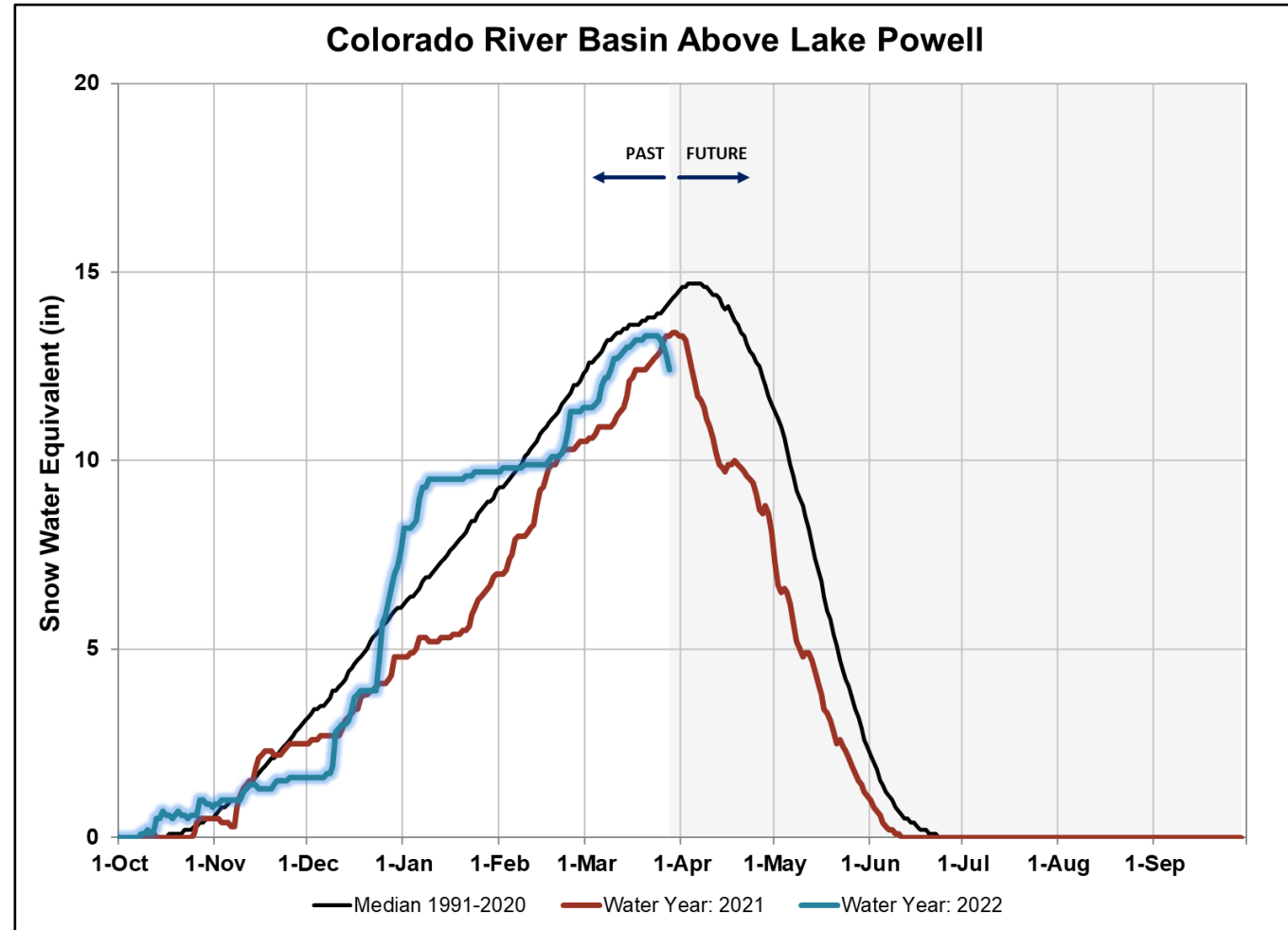
Colorado River Basin above Lake Powell

Water Year 2022
Precipitation
(year-to-date)

97% of average

Current Snowpack

88% of median



¹Percent of normal precipitation is based on an arithmetic mean, or average; percent of normal snowpack is based on the median value for a given date.

²Statistics are based on the 30-year period of record from 1991-2020.



Colorado River Basin Storage

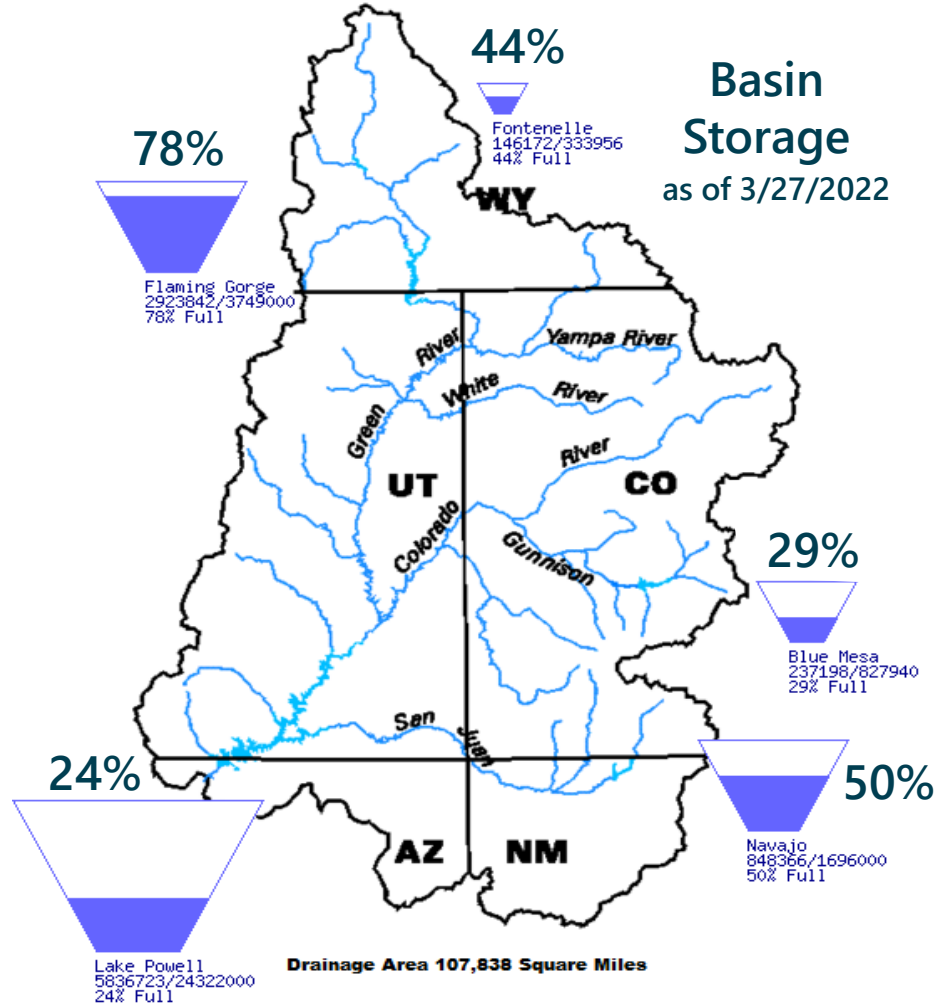
as of April 4, 2022

Reservoir	Percent Full	Storage (maf)	Elevation (feet)
Lake Powell	24%	5.81	3,523.0
Lake Mead	33%	8.50	1,061.0
Total System Storage	35%	20.9	NA

Total system storage was 44% of capacity, or 26.3 maf in storage, at this time last year



Upper Basin Storage



Available online at: www.usbr.gov/uc/water/basin/index.html

Unregulated Inflow Forecast as of March 16, 2022

Month/Period	Inflow (kaf)	Percent of Average ¹
Feb 2022 <i>(Observed)</i>	215	59
Mar 2022	300	50
Apr 2022	525	58
May 2022	1,600	77
Apr-Jul 2022	4,600	72
WY 2022	6,782	71

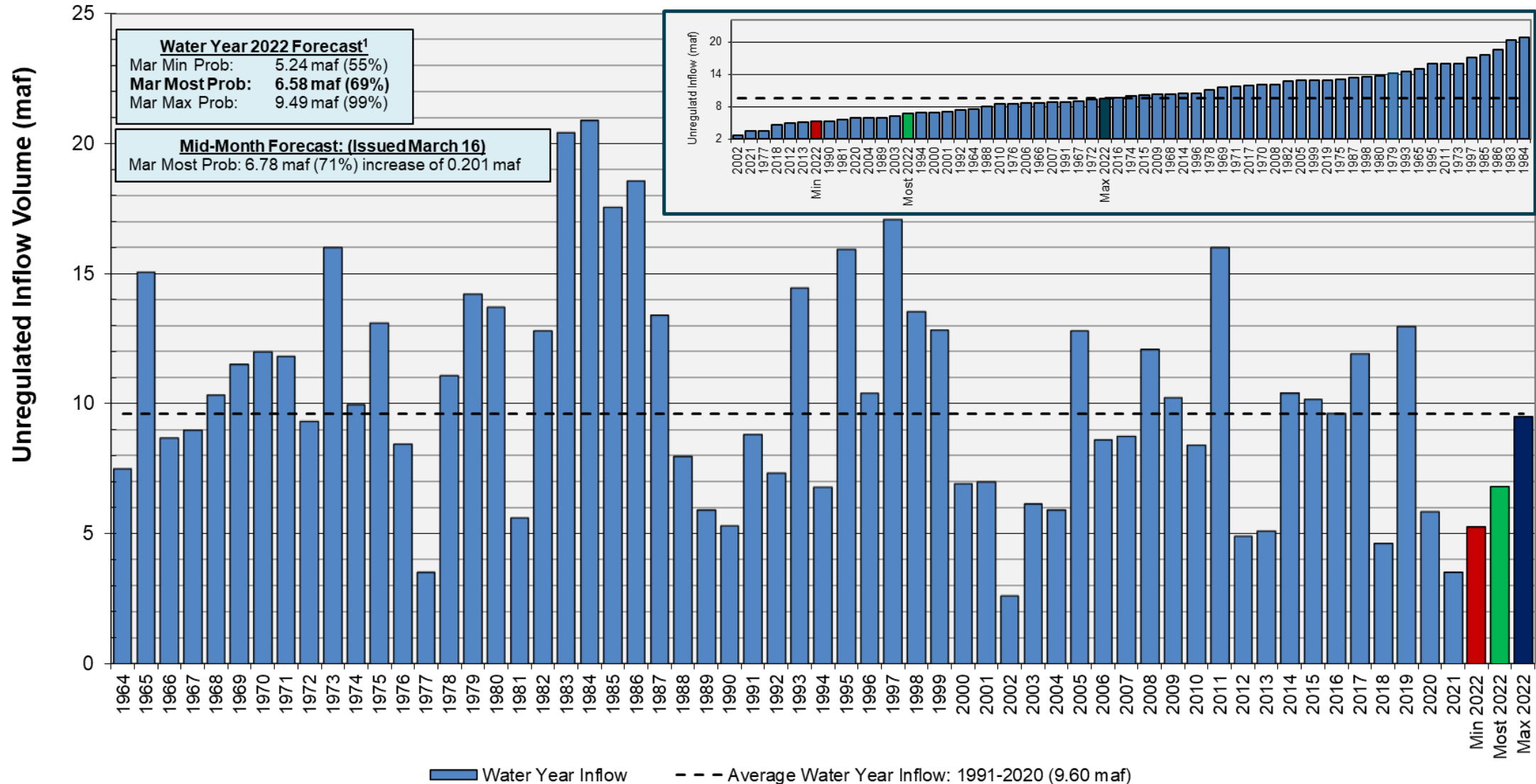
¹WY 2022 statistics are based on the 30-year period of record from 1991-2020.



Lake Powell Water Year Unregulated Inflow¹

Forecast as of March 16, 2022

Comparison with History

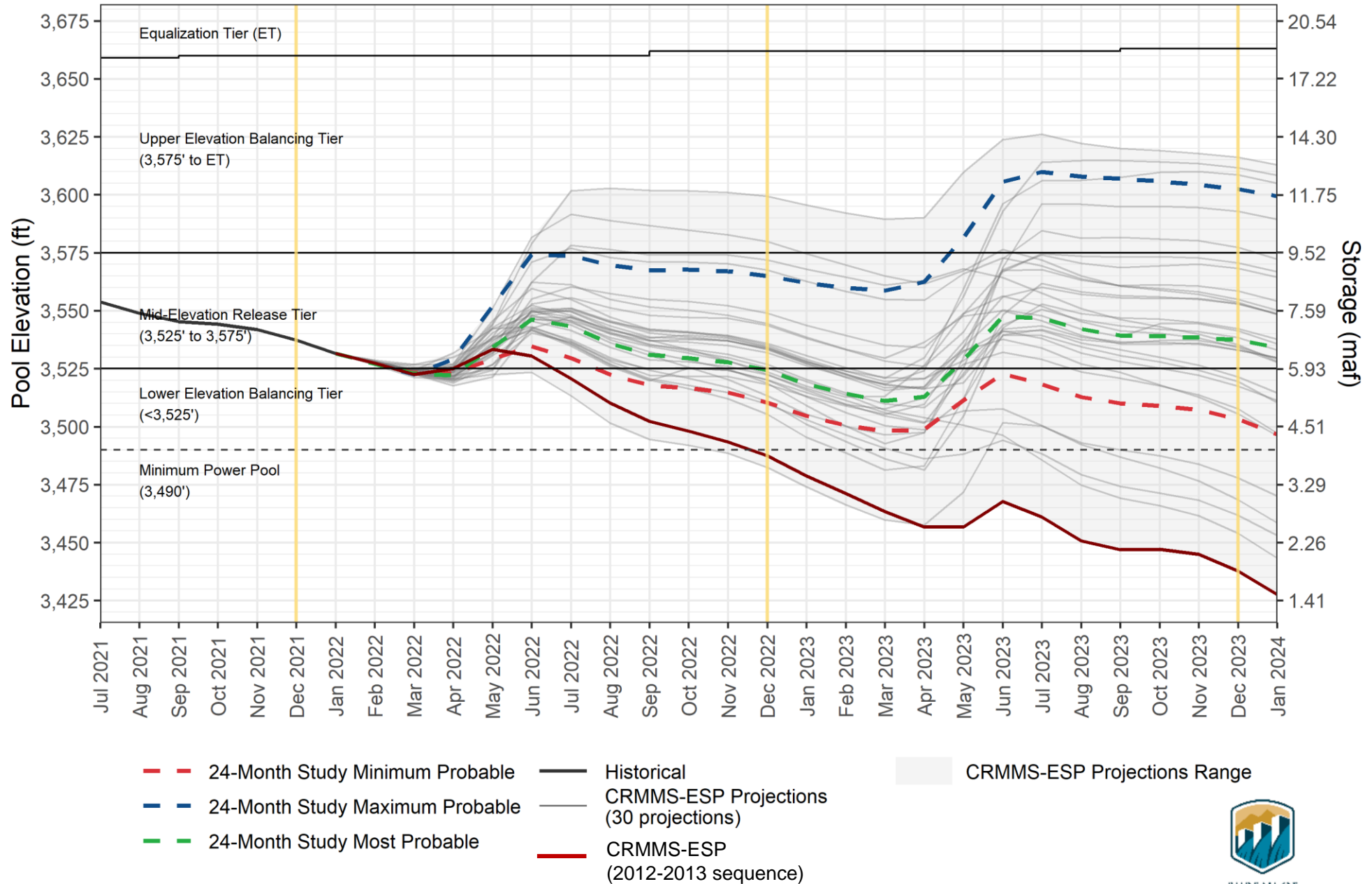


¹Water Year 2022 statistics are based on the 30-year period of record from 1991-2020.



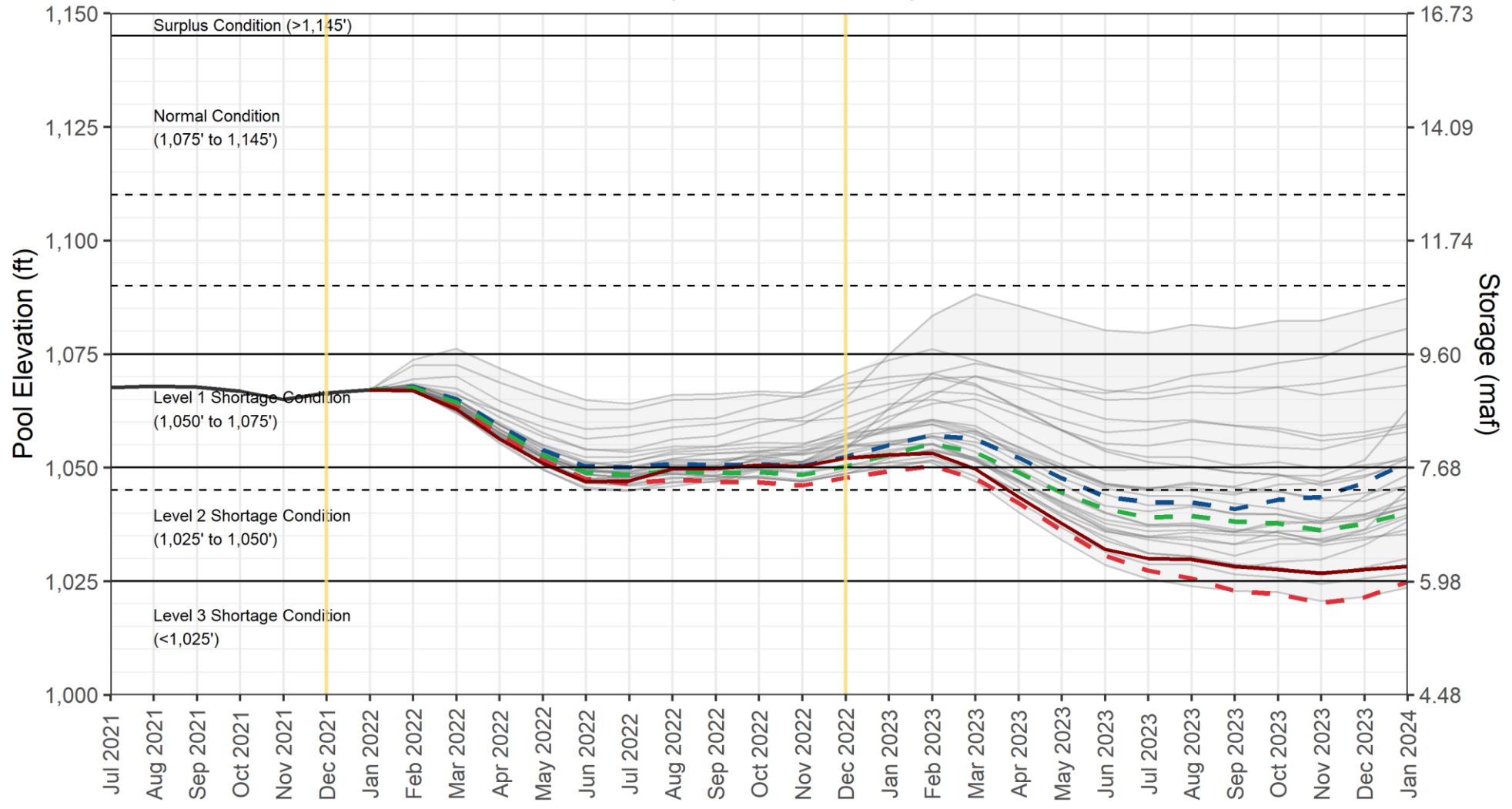
Lake Powell End-of-Month Elevations

CRMMS Projections from February 2022



Lake Mead End-of-Month Elevations

CRMMS Projections from February 2022



- - - 24-Month Study Minimum Probable
- - - 24-Month Study Maximum Probable
- - - 24-Month Study Most Probable
- Historical
- CRMMS-ESP Projections (30 projections)
- CRMMS-ESP (2012-2013 sequence)
- CRMMS-ESP Projections Range



2007 Interim Guidelines, Minute 323, Lower Basin Drought Contingency Plan, and Binational Water Scarcity Contingency Plan Total Volumes (kaf)

Lake Mead Elevation (feet msl)	2007 Interim Guidelines Shortages		Minute 323 Delivery Reductions	Total Combined Reductions	DCP Water Savings Contributions			Binational Water Scarcity Contingency Plan Savings	Combined Volumes by Country <i>US: (2007 Interim Guidelines Shortages + DCP Contributions)</i> <i>Mexico: (Minute 323 Delivery Reductions + Binational Water Scarcity Contingency Plan Savings)</i>					Total Combined Volumes
	AZ	NV	Mexico	Lower Basin States + Mexico	AZ	NV	CA	Mexico	AZ Total	NV Total	CA Total	Lower Basin States Total	Mexico Total	Lower Basin States + Mexico
1,090 - 1,075	0	0	0	0	192	8	0	41	192	8	0	200	41	241
1,075 - 1050	320	13	50	383	192	8	0	30	512	21	0	533	80	613
1,050 - 1,045	400	17	70	487	192	8	0	34	592	25	0	617	104	721
1,045 - 1,040	400	17	70	487	240	10	200	76	640	27	200	867	146	1,013
1,040 - 1,035	400	17	70	487	240	10	250	84	640	27	250	917	154	1,071
1,035 - 1,030	400	17	70	487	240	10	300	92	640	27	300	967	162	1,129
1,030 - 1,025	400	17	70	487	240	10	350	101	640	27	350	1,017	171	1,188
<1,025	480	20	125	625	240	10	350	150	720	30	350	1,100	275	1,375

The Secretary of the Interior will take affirmative actions to implement programs designed to create or conserve 100,000 acre-ft per annum or more of Colorado River System water to contribute to conservation of water supplies in Lake Mead and other Colorado River reservoirs in the lower basin. All actions taken by the United States shall be subject to applicable law, including availability of appropriations.



Thank you!

Peter Nelson

Colorado River Board of California

pnelson@cvwd.org

