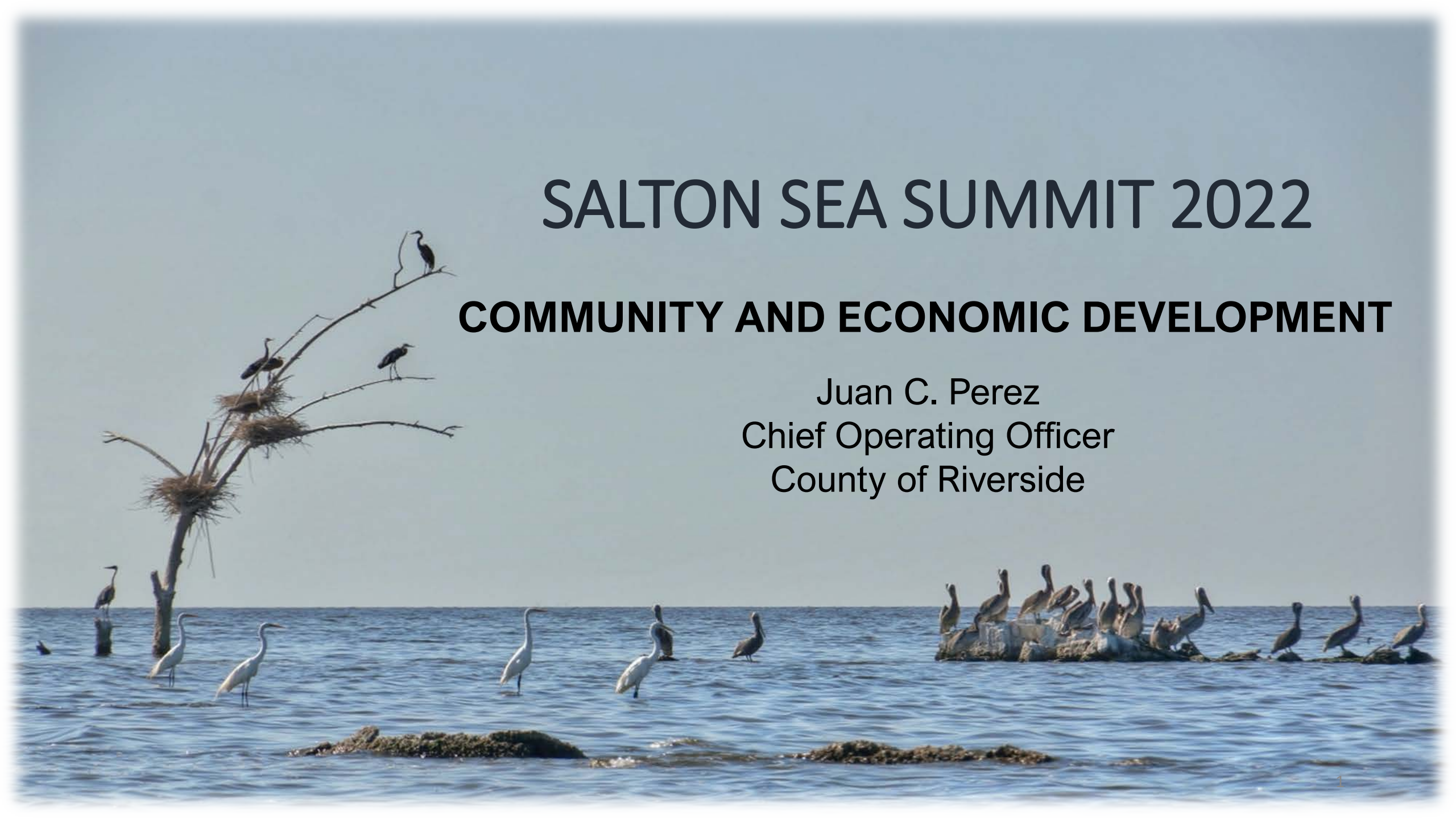


SALTON SEA SUMMIT 2022

COMMUNITY AND ECONOMIC DEVELOPMENT

Juan C. Perez
Chief Operating Officer
County of Riverside



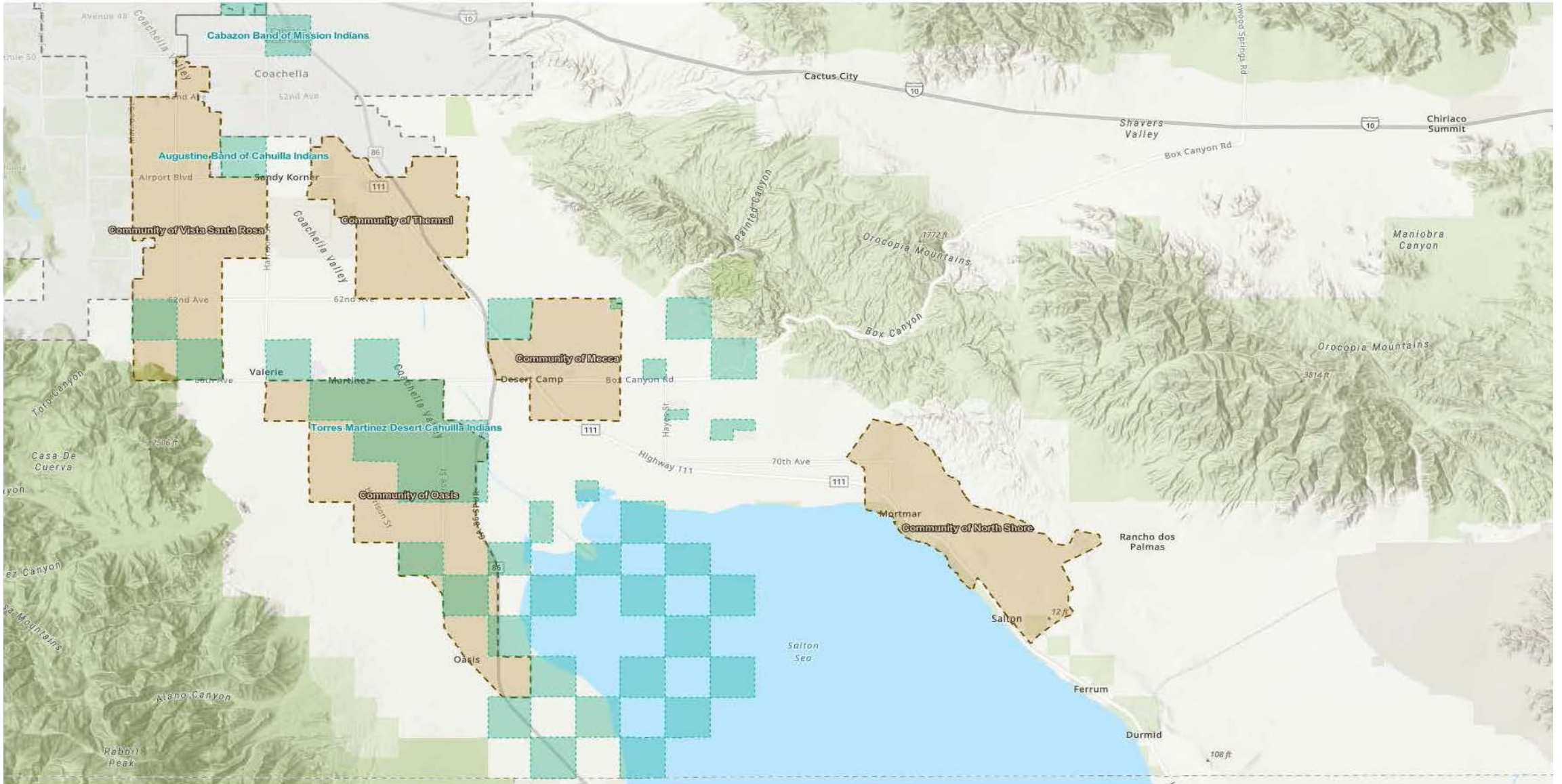
EASTERN COACHELLA VALLEY

FOCUS ON IMPROVING QUALITY OF LIFE

- Salton Sea is an integral component to a multi-faceted approach
- Community Plans – Land Use
- Housing
- Infrastructure, Transportation and Mobility



EASTERN COACHELLA VALLEY



COUNTY OF RIVERSIDE INITIATIVES

- Salton Sea Restoration - North Lake Demonstration Project
- Unincorporated Communities Initiative
- Thermal / Oasis Community Plan
- Investments in Infrastructure
 - American Rescue Plan
- Partnerships with Federal, State and Local Agencies
- Enhanced Infrastructure Financing Districts



THERMAL / OASIS COMMUNITY

Thermal

21,209 Acres

32 Sq. Miles

Population: 2,865 (2010 Census)

Oasis

43,928 Acres

69 Sq. Miles

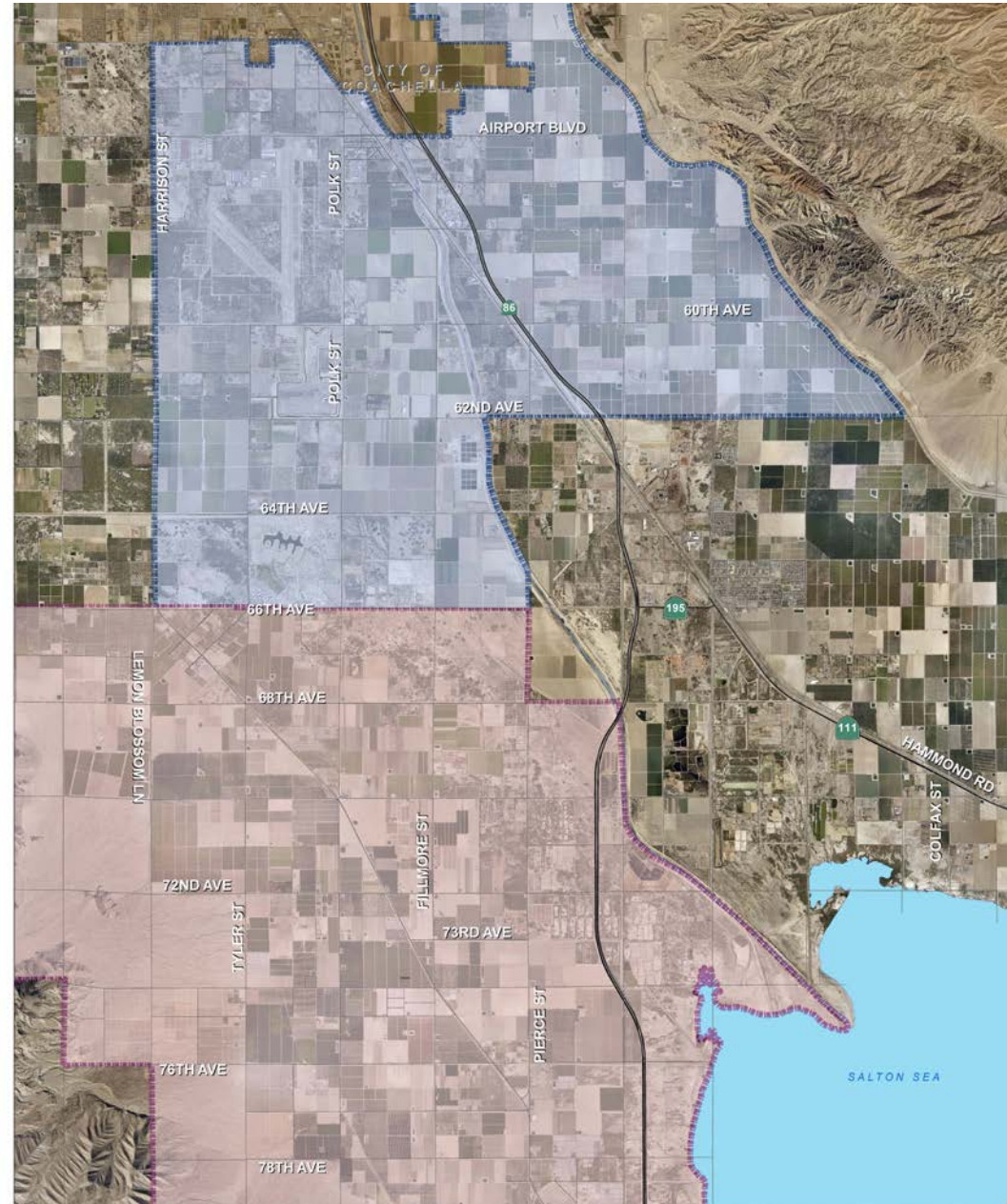
Population: 6,890 (2010 Census)

Total

65,137 Acres

101 Sq. Miles

Population: 9,755



COMMUNITY PLANNING APPROACH

- Identify community values and vision
- Used to guide future growth
- Provides a path to address community needs & concerns
- Create a thriving and sustainable community
 - What can we do now to improve quality of life?
 - What is ahead in the next 5 – 10 years?
 - What will our communities look like in 20 - 30 years?



Questions?

