



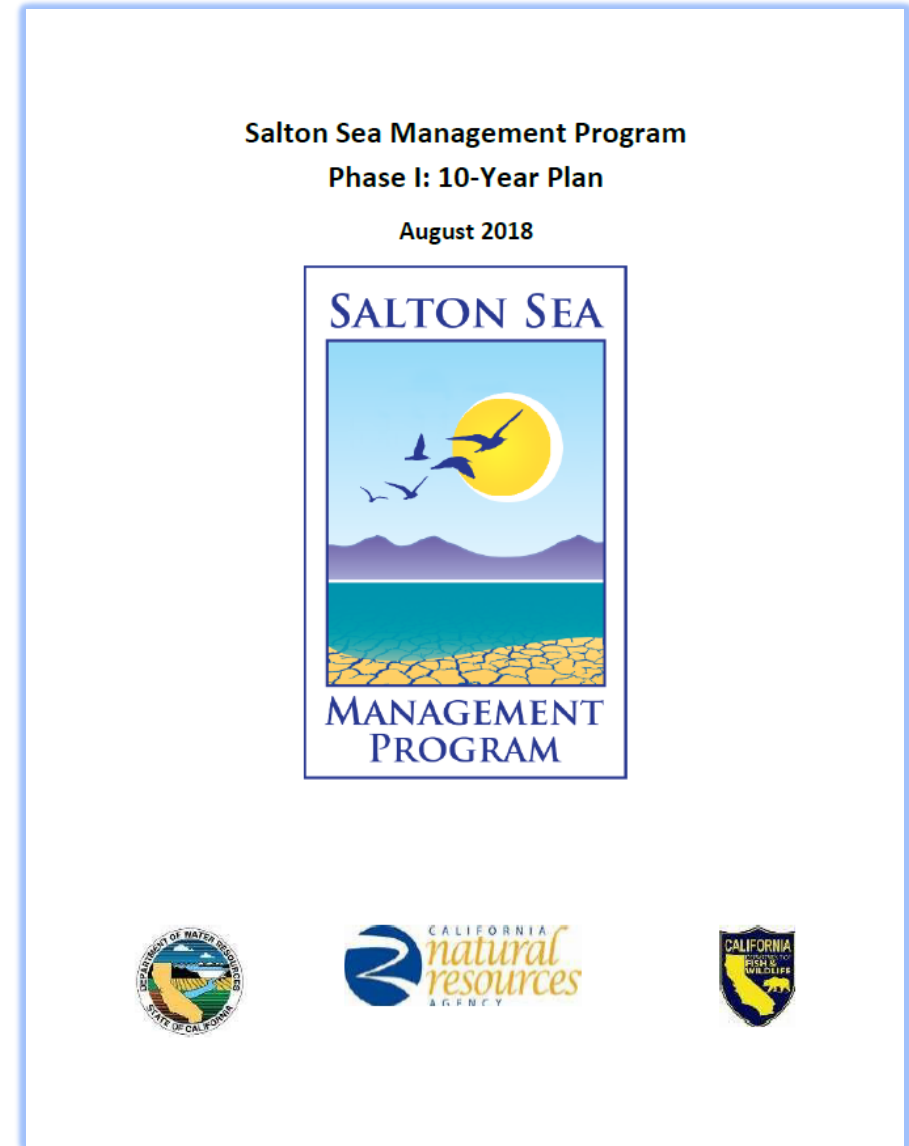
Salton Sea Management Program Update

Salton Sea Summit | October 18, 2019



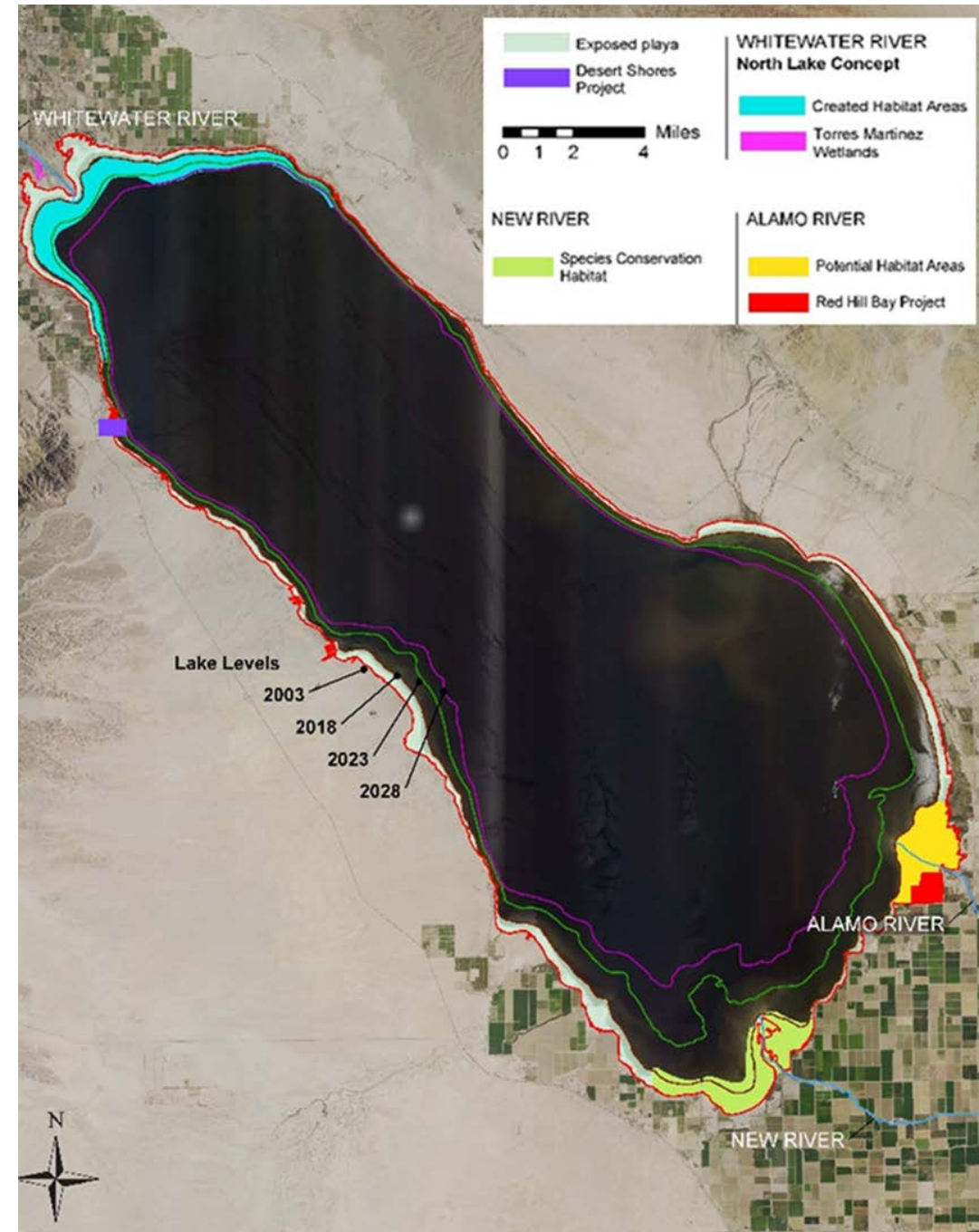
Salton Sea Management Program Updates

1. General Overview
2. Habitat Projects
3. Dust Suppression Projects
4. Community Engagement
5. Partnerships
6. Planning



SSMP Phase I 10-Year Plan 2018 - 2028

- State is committed to making progress on the ground
- Urgent need to address public health and ecological challenges
- Near-term priorities
 - 15,000 acres of habitat projects
 - New River
 - Whitewater River
 - Alamo River
 - 15,000 acres of dust suppression projects





SSMP Habitat Projects Species Conservation Habitat

- First major SSMP habitat project
- 3,770-acre site of exposed lakebed
- Southwestern end of the Sea, east & west of the New River
- Request for Proposals expected to be issued in coming weeks
- Estimated to be complete by end of 2023

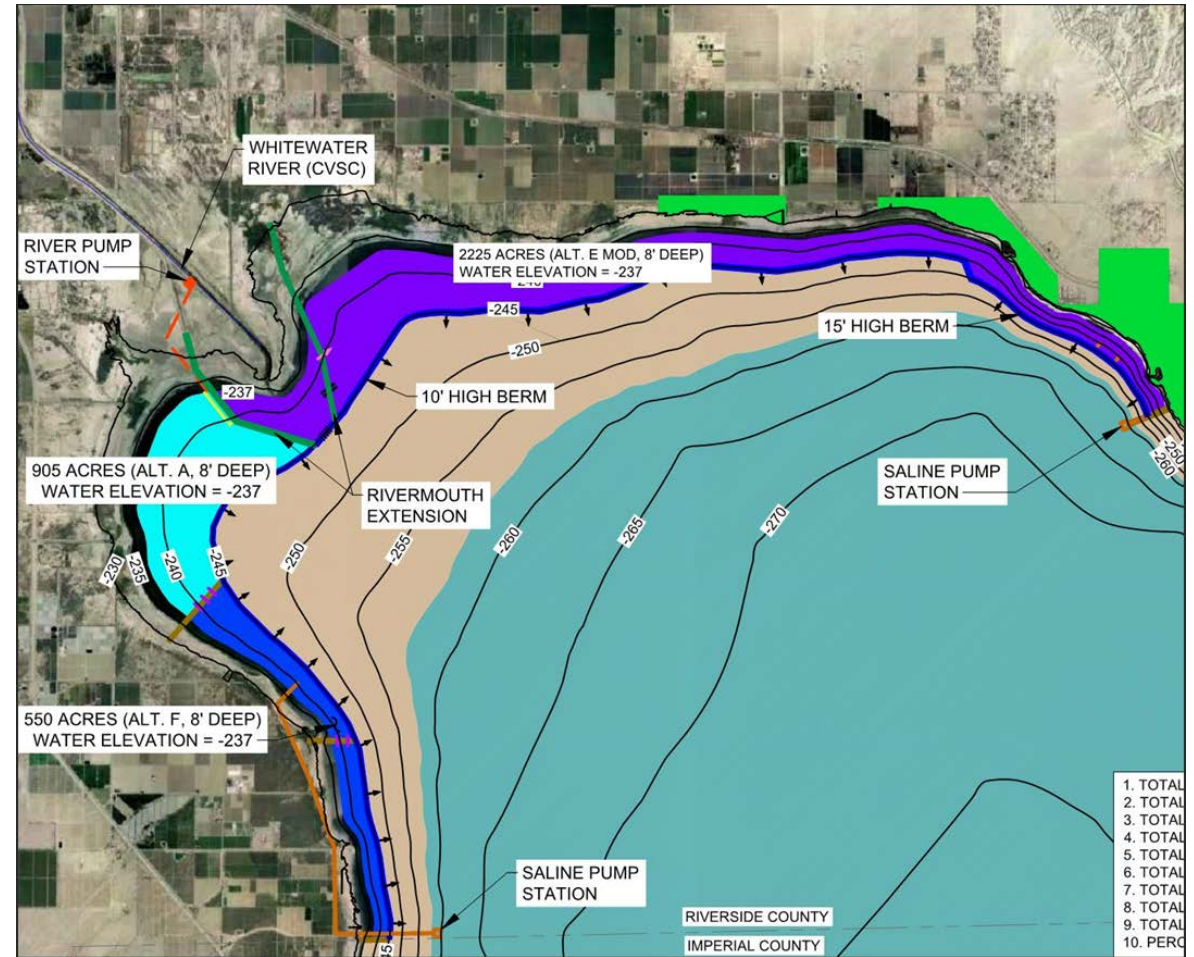
SSMP Habitat Projects

Future Projects

North Lake Project - Concept

- Approximately 3,680-acre horseshoe-shaped lake
- North end of the Salton Sea adjacent to the Whitewater stormwater channel

Alamo River - Future site



SSMP Dust Suppression - Bruchard Road Project



- Trenching on 150 – 200 acres of exposed playa
- Located on the southern of the Sea
- Estimated to be complete in next few months

Legend

- New River
- ▭ Project Area

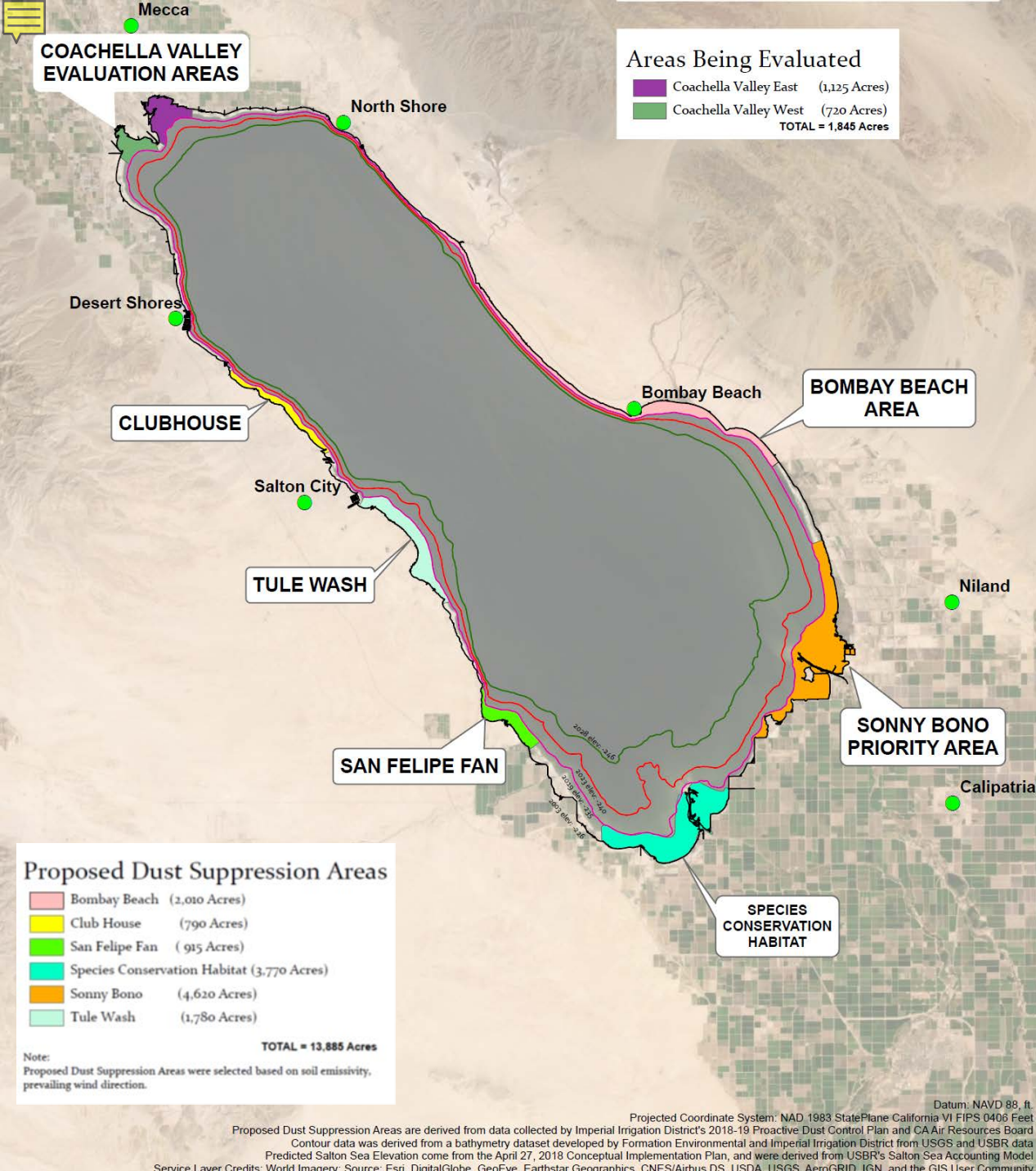
0 2,000 4,000 Feet

Created: 10/07/2019



Dust Suppression Project - 122.33 acres
Tilling Emissive Playa Near Bruchard Rd
Salton Sea Management Program
California Department of Water Resources
California Natural Resources Agency





SSMP Dust Suppression Future Projects & Engagement

- Evaluating sites for 9,000 acres of dust suppression
- Preliminary locations determined by soil emissivity, prevailing wind patterns and threat to populated areas
- Public meeting later this fall to gather input on priorities
- Developing a programmatic approach to environmental planning and permitting



Transparency / Community Engagement



- Work with local leaders and community members to improve transparency and engagement
- Incorporate community input and priorities where possible
- Launch new Salton Sea website and e-newsletter
- Increase local presence
- Identify opportunities for local employment

Partnerships



- Work with local, state, tribal and federal partners to pursue funding
- Develop templates for land access, water availability and recreation opportunities
- Engage with partners to address scientific data gaps and identify priorities

SSMP Planning



- Implement an additional 26,000 acres
- Programmatic approach to environmental planning and permitting
- Establishing framework to address critical path items including water availability and land access
- Complete independent analysis of water import concepts