

# Salton Sea Management Program

---

DUST SUPPRESSION

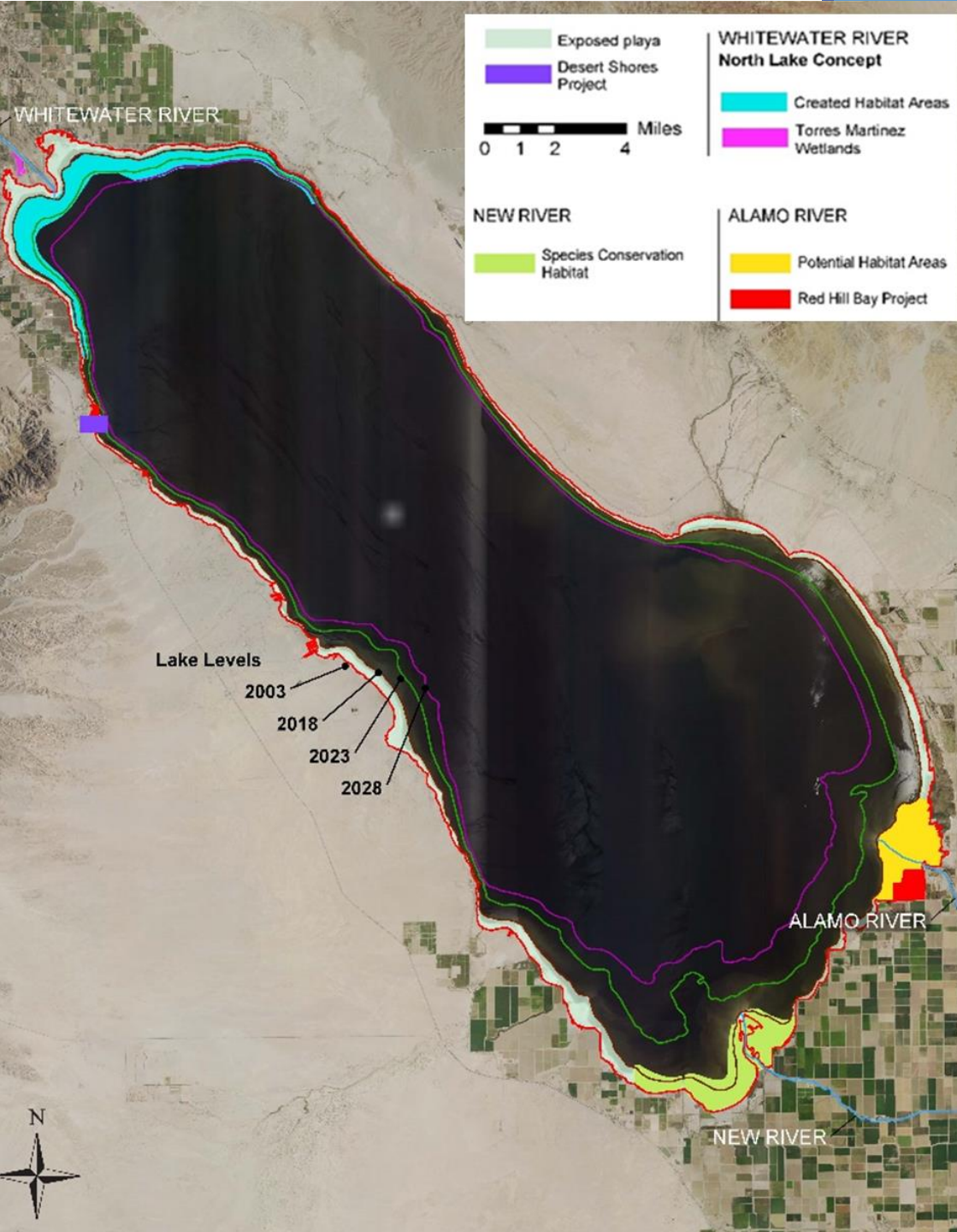
# Presentation Overview

---

Habitat and Dust Suppression Areas and Projects

Dust Suppression

Short and Long Term Plans



# Current and Future Areas

Current efforts: Mouth of the New, Alamo, Whitewater Rivers

- Primary playa exposure zones

Anticipated 15,000 acres of habitat as the sea recedes:

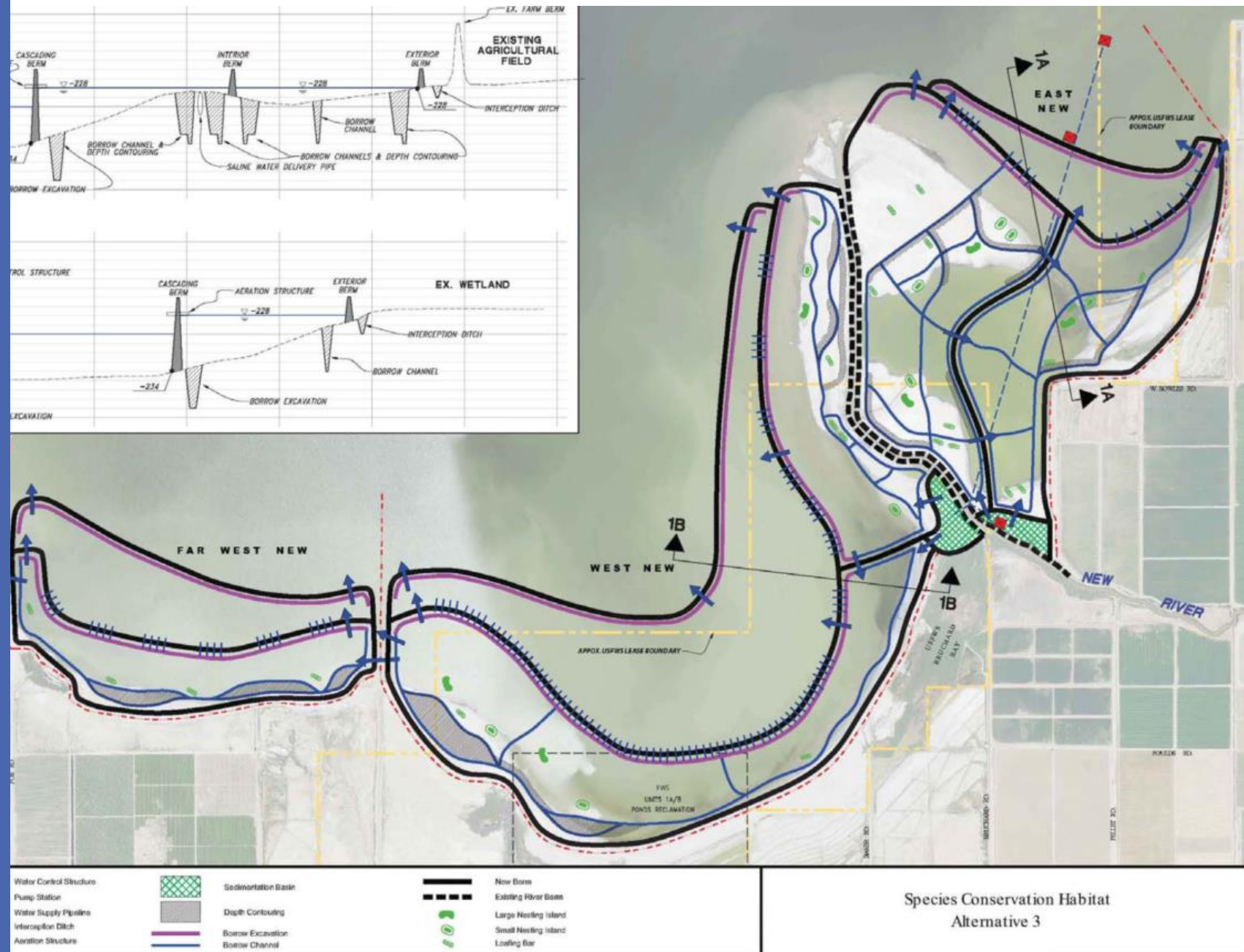
- New River
- Whitewater River
- Alamo River

Anticipate implementing 15,000 ac of dust suppression projects by 2028

# New River

## New River Species Conservation Habitat

- Approx. 3,770 ac
- Covering exposed playa in the New River area with habitat ponds
- Contract award in mid 2020 with potential completion by end of 2023
- Projected Cost- \$206 M



Species Conservation Habitat  
Alternative 3







# PM<sub>10</sub> Exceedance Days Associated With High Winds from Playa and Non-Playa Areas

Numbers and Percentages of 2018 PM <sub>10</sub> Exceedance Days Associated with Playa or Non-Playa Area Emissions – Or Both			
Station	Playa Areas Contributed	Non-Playa Areas Contributed	Both Area Types Contributed
<b>North Shore (Riverside County)</b>			
Salton Sea Park	0 (0%)	2 (100%)	0 (0%)
Torres Martinez	0 (0%)	11 (100%)	0 (0%)
<b>Central and South Shores (Imperial County)</b>			
Bombay Beach	4 (80%)	1 (20%)	0 (0%)
Naval Test Base	2 (10%)	19 (95%)	1 (5%)
Salton City	2 (11%)	17 (89%)	0 (0%)
Sonny Bono	4 (100%)	1 (20%)	1 (20%)

# Preliminary Dust Supp. Areas

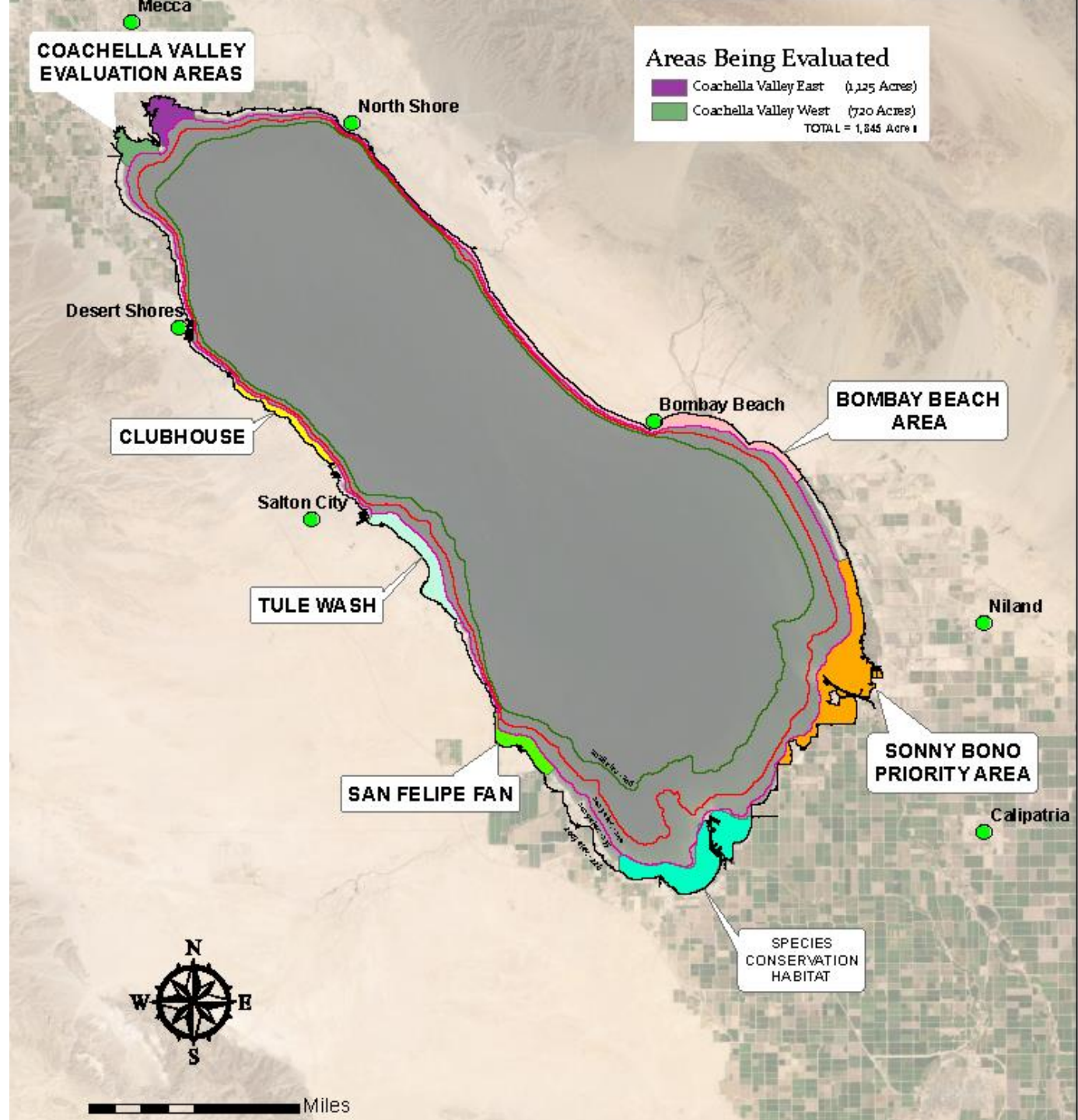
Approx. 9,000 acres

## Proposed Dust Suppression Areas

	Bombay Beach	(2,010 Acres)
	Club House	(790 Acres)
	San Felipe Fan	(915 Acres)
	Species Conservation Habitat	(3,770 Acres)
	Sonny Bono	(4,620 Acres)
	Tule Wash	(1,780 Acres)

TOTAL = 13,885 Acres

Note:  
Proposed Dust Suppression Areas were selected based on soil emissivity,  
prevailing wind direction.



# Bruchard Rd. Playa

Approx. 150 to 200  
acres

- BLM Land
- Access through IID's land
- Permit pending



## Legend

- New River
- Project Area

0 2,000 4,000 Feet

Created: 10/07/2019



Dust Suppression Project - 122.33 acres  
Tilling Emissive Playa Near Bruchard Rd  
Salton Sea Management Program  
California Department of Water Resources  
California Natural Resources Agency



# Project Planning and Permitting Short Term

---

Aquatic Resources Delineation - 2019

Planning and Designing Projects Above Corps Jurisdictional  
Areas based on ARD

Implementation and Monitoring – 2019/2020




# Project Planning and Permitting

## Long term

---

Agreement with ACOE will be executed to support environmental planning and permitting – expected in 2019



NEPA docs and permits – expected completion Winter of 2020/2021



### Other critical path items

- Securing water supply, acquiring land access/easements, and securing funding

# Partnership

---

## **Cooperation on Dust Suppression Plan**

### **Agreement with IID**

- Contract for Implementation

### **Agreement with USBR**

- Seed money for Implementation